



CREATE WITH US

INTERNATIONAL TUTORIAL BUNDLE

August 2021

Expressions in Ink

Index

Caroline van der Straaten	1 - 12
Tamara Bertram	13 - 17
Mary Eastridge	18 - 32
Jan Mansor Brown	33 - 40
Julie Gilson	41 - 48
Marine Wiplier	49 - 54
Jessica Brigden	55 - 58
Jackie Bultje	59 - 62
Kayla Renee	63 - 67
Jeanna Bohanon	68 - 71
Linda Dalke	72 - 76
Narelle Farrugia	77 - 83
Jane Proffitt	84 - 89
Martin Stone	90 - 93
Martha Groeger	94 - 98



Expressions in Ink Treat bag gift card

Caroline van der Straaten
The Netherlands



Products used

[Click Here](#) to Shop with Caroline van der Straaten



STAMPSET / BUNDLE

- Artistically Inked bundle

CARDSTOCK

- Basic White A4 cardstock
- Basic Black A4 cardstock
- Soft Succulent A4 cardstock

INKPADS

- Bermuda Bay
- Coastal Cabana
- Just Jade
- Soft Succulent
- Daffodil Delight
- Pool Party (optional)
- Memento black
- Versamark

DSP/EMBELLISHMENTS

- Beautifully Penned (free during Sale A Bration)
- Ombre treat bags
- White embossing powder

ADHESIVES

- Multi Purpose Liquid Glue
- Dimensionals
- Glue Dots

PUNCHES / DIES

- Artistic Dies

TOOLS

- Bone Folder
- Paper Snips
- Trimmer
- Stampin' Cut and Emboss machine
- Heat Tool

Measurements

METRIC - (For A4 cardstock only)

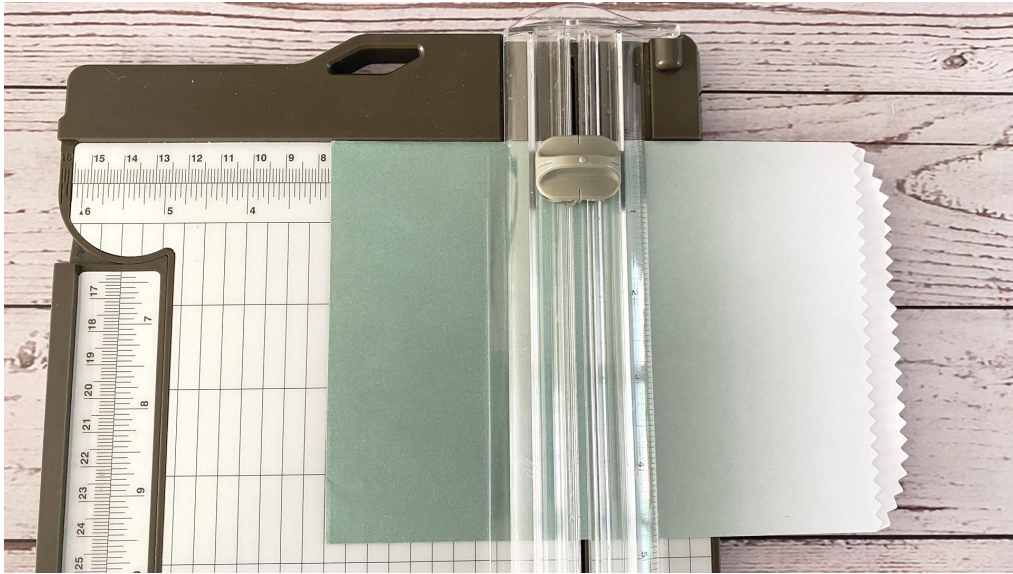
- **Basic White Cardstock - insert card**
 - 11.5 x 9.5 cm
- **Beautifully Penned Series Paper**
 - Strip of 5 x 30.5 cm
 - Strip of 1.5 x 11.5 cm
- **Soft Succulent Cardstock**
 - 0.5 x 11.5 cm
- **Basic Black Cardstock**
 - 1.5 x 11.5 cm

Measurements

IMPERIAL - (For letter size cardstock only)

- **Basic White Cardstock - insert card**
 - 4.5 x 3.¾"
- **Beautifully Penned Series Paper**
 - Strip of 2 x 12"
 - Strip of 5/8 x 4.5"
- **Soft Succulent Cardstock**
 - 1/4 x 4.5"
- **Basic Black Cardstock**
 - 0.5 x 4.5"

Instructions



- Score the Ombre treat bag at 3" or 7.5 cm / Ril de Ombre treat bag op 3" of 7.5 cm



- Fold the scoreline with a bone folder / Vouw de rillijn om met een vouwbeen



- Wrap a piece of DSP (2 x 12" - 5 x 30.5 cm) around the folded treat bag and cut off the excess. Make sure you have a little overlap where you can glue the two pieces together. / Vouw een stuk designpapier (2 x 12" - 5 x 30.5 cm) om de gevouwen treat bag en knip het overgebleven stuk design papier af. Zorg er wel voor, dat je de twee delen designpapier elkaar iets overlappen, zodat je ze aan elkaar kunt plakken.
- Glue only the dsp together. / Lijm het design papier aan elkaar. papier



- Cut a piece of basic white measuring 4.5 x 3.¾" or 11.5 x 9.5 cm. and a strip of dsp measuring 4.5 x 5/8" or 11.5 x 1.5 cm / Snij een stuk wit

karton af op 4.5 x 3.¾" of 11.5 x 9.5 cm en snij een stuk designpapier af op 4.5 x ⅝" of 11.5 x 1.5 cm



- Stamp the watercolor swirl in Soft Succulent on the white card. Stempel de watercolor vlek in Soft Succulent op de witte kaart.



- Cut a strip of 4.5 x ¼" of 11.5 x 0.5 cm Soft Succulent cardstock / Snij een strook Soft Succulent cardstock af in de maat 4.5 x ¼" of 11.5 x 0.5 cm
- Glue the strip designer series paper and the strip of Soft Succulent cardstock onto the cardbase. Corner round the edges. / Plak de strook designpapier en het strookje Soft Succulent cardstock op de kaart. Rond te hoekjes af met een pons.



- Stamp and die cut the flowers as in the photo above. The Pool Party flower parts are optional. I ended up not using them. / Stempel en stans de bloemen, zoals op de foto hierboven. De pool party delen zijn optioneel. Die heb ik uiteindelijk niet gebruikt.



- Stamp Best wishes in the corner of the card with Memento black ink. Stempel de tekst Best wishes in de hoek van de kaart met Memento black inkt.



- Glue down the flower parts on the card as shown in the photo. I used dimensionals for the flowers and glue dots for the leaves. Lijm de onderdelen van de bloem op de kaart, zoals geshowd op de foto. Voor de bloemen gebruikte ik dimensionals en voor de bladeren glue dots.



- Stamp the the Happy Birthday sentiment with versamark on a strip of basic Black cardstock measuring ½" and heat emboss in white. Make a flag tale on the right end. / Stempel de Happy Birthday tekst met versamark en emboss in wit op een strip zwart karton van 1.5 cm.

Knip de strook met tekst in een vlag aan de rechter kant.



- Position the flowers onto the belly band and glue them down. Place the Happy Birthday Banner op top. / Positioneer de bloemen op de band en plak ze vast. Plak Happy Birthday banner er bovenop.



- Dress it up with the little yellow flowers and place the card in the treat bag. You can also add a gift card or some tags in the first pocket. / Fleur de boel een beetje op met een paar gele bloemetjes en plaats de kaart in de treat bag. Je kunt in het eerste vak een cadeaukaart stoppen of bijv. tags.



Enjoy the tutorial. If you have any questions please feel free to ask.



Caro

Caroline van der Straaten

Independent Stampin' Up!® demonstrator

The Netherlands

- MY STAMPIN' UP! SHOP: [Click here](#)
- BLOG: www.caroskaartjes.blogspot.com
- INSTA: [@caroskaartjes](#)
- FB: [Caro's Kaartjes](#)
- YOU TUBE: [Caro's Kaartjes](#)
- Email: caroskaartjes@hotmail.nl

If you don't have a demonstrator yet, I'd love to be yours!
Please send me an Email if you need more information on Stampin' Up! products,
if you want to order or if you'd like a catalogue.
My Email address is: caroskaartjes@hotmail.nl



Expressions In Ink meets Vellum

Tamara Bertram, Canada
tamarabertram.stampinup.net

If you live in Canada, don't have a demonstrator you work with and would like a catalogue please email me at bertram4@shaw.ca



Products used:

[Click Here](#) to Shop with Tamara Bertram in Canada.

BUNDLE

Artistically Inked Bundle

CARDSTOCK

Basic White
Just Jade
Vellum

COLOURING

Just Jade Classic Ink

DSP & EMBELLISHMENTS

Elegant Faceted Gems

ADHESIVES

Stampin' Seal
Tear & Tape
Mini Dimensionals

TOOLS

Stampin' Cut and Emboss Machine
Paper Snips
Bone Folder
Take Your Pick Tool

Measurements

METRIC - (For A4 cardstock)

- Card Base – Basic White
 - 14.9 cm x 21 cm
- Layer - Just Jade
 - 13.02 cm x 8.57 cm
- Vellum
 - approx 11 cm x 10 cm
- Scraps of Basic White for the sentiment

IMPERIAL - (For letter size cardstock)

- Card Base – Basic White
 - 8 ½" x 5 ½"
- Layer - Just Jade
 - 4 ¾" x 3 ½"
- Vellum
 - approx 4 ½" x 4"
- Scraps of Basic White for the sentiment

Instructions:

- Fold your Basic White card base in half. Burnish well with your bone folder for a nice, crisp fold.
- **First we do a bit of stamping to prepare our base and our layer:**
 - Using your Just Jade ink, stamp the large “splotch” image in the top right hand corner, reink the stamp, and then stamp again in the bottom left hand corner on your Basic White card base.
 - Using your Just Jade ink, stamp the large “splotch” image all over the Just Jade card stock layer. I stamped once with “full ink” and then again, without reinking. I repeated that several times. The darker and lighter images add depth.



- **Next we need to distress our Just Jade layer:**
 - Using your paper snips, drag the edge of the snips along the edges of your Just Jade layer until it is ragged and torn. You can also crumple, bend and “scrunch” your paper to add texture to it.
 - Drag the edges of the Just Jade layer along the surface of the Just Jade ink pad to add colour. Sponging the edges is also an option.



- **Next we make our Vellum layer and Sentiment:**

- Using the large flower die from the Artistically Inked dies, die cut a piece of vellum and set your flower aside.
- Using your Just Jade ink, stamp the “thanks” sentiment on your Basic White scrap and fussy cut around it using your paper snips.

- **Now we assemble:**

- Attach the Just Jade layer to your card base using your adhesive of choice. I used Stampin’ Seal.
- To attach the piece of vellum, add a small piece of Tear & Tape to the right hand side of your Just Jade layer in the approximate position you want your sentiment to go (picture 1 below). Remove the top wax layer of the Tear & Tape and stick the vellum flower to it (picture 2 below). Most of the flower will NOT be attached to the base, but that is fine. This one little piece of tape will hold it in place.



- To attach the sentiment, apply mini dimensionals to the back of the “thanks” and adhere on top of the vellum flower, covering the Tear & Tape (picture 3 above)

- Attach three Faceted Gems, using your Take Your Pick Tool and Ta-Da! Done!

Enjoy the tutorial. Any questions please ask!

Tamara Bertram

tamarabertram.stampinup.net

bertram4@shaw.ca



[Click Here](#) to shop with
Mary Eastridge in the US

Expressions In Ink

Mary Eastridge

maryshouseofcardsandmore.com

Beautiful Diamond Fold Card and Gift Box



Products used

BUNDLE

- Artistically Inked Bundle

CARDSTOCK

- Basic White
- Evening Evergreen
- Gold Foil Sheet

COLOURING

- Polished Pink Ink
- Pale Papaya Ink
- Evening Evergreen Ink
- VersaMark Ink
- Gold Metallic Emboss Powder

Extras

- Layering Circle Dies

DSP & EMBELLISHMENTS

- Expressions In Ink DSP
- Evening Evergreen Open Weave Ribbon
- Gilded Gems

ADHESIVES

- Multi Purpose Liquid Glue
-
- Dimensionals
- Seal

TOOLS

- Paper Snips Scissors
- Bone Folder
- Trimmer
- Score Board
- Cut & Emboss Machine

(If you live in the United States, don't have a demonstrator you work with and would like a catalogue please email me mary@maryshouseofcardsandmore.com)

Measurements

Card

- Card Base - Evening Evergreen - 6 X 12 - Score on the long side on 3 & 6
- DSP - Gold Stripe 2 @ 4 X 4, Floral 2 @ 2 $\frac{5}{8}$ X 2 $\frac{5}{8}$, Floral 2 @ 2 $\frac{3}{4}$ X 5 $\frac{3}{4}$, Gold Stripe 1 @ 2 $\frac{3}{4}$ X 2 $\frac{3}{4}$, 2 $\frac{1}{8}$ " Circle
- Gold Foil - 2 @ 3 $\frac{3}{4}$ X 3 $\frac{3}{4}$, 2 @ 2 $\frac{7}{8}$ X 5 $\frac{7}{8}$, 2 $\frac{1}{4}$ " Scallop Circle, $\frac{7}{8}$ X 1 $\frac{1}{2}$
- Basic White Card Stock - 3 $\frac{3}{4}$ X 3 $\frac{3}{4}$, 2 X 2 $\frac{1}{2}$, $\frac{3}{4}$ X 1 $\frac{1}{8}$

Gift Box

- Gold Foil - 6 X 6, 3 $\frac{1}{8}$ " Scallop Circle, $\frac{3}{4}$ X 3
- DSP - Floral 5 $\frac{3}{4}$ X 5 $\frac{3}{4}$, Stripe 2 X 6, 3" Circle
- Evening Evergreen Card Stock - 1 @ 7 $\frac{1}{8}$ X 7 $\frac{1}{8}$ - Score on $\frac{1}{2}$ on the way around, 1 @ 7 $\frac{1}{4}$ X 7 $\frac{1}{4}$ - Score on $\frac{1}{2}$ all the way around

** If you have your Layering Circle Dies from the largest set to the smallest, I used the Largest set for the box and the 4th to the largest for the card.

** I used Gold Foil for the scallop disc and the DSP that is pink with gold running through it for the smooth disc

Metric

Card

- Card Base - Evening Evergreen Card Stock - 15.24 cm X 30.48 cm - Score on the long side on 7.62 & 15.24
- DSP - Gold Stripe 2 @ 10.16 cm X 10.16 cm, Floral 2 @ 6.67cm X 6.67cm, Floral 2 @ 6.99 cm X 14.60 cm, Gold Stripe 6.99 cm X 6.99 cm, 5.40 cm Circle
- Gold Foil - 2 @ 9.53 cm X 9.53 cm, 2 7.30 X 14.92, 5.71cm Scallop Circle, 2.22 cm X 3.81 cm
- Basic White Card Stock - 9.53 cm X 9.53 cm, 5.08 cm X 6.35 cm, 1.90 cm

X 2.54

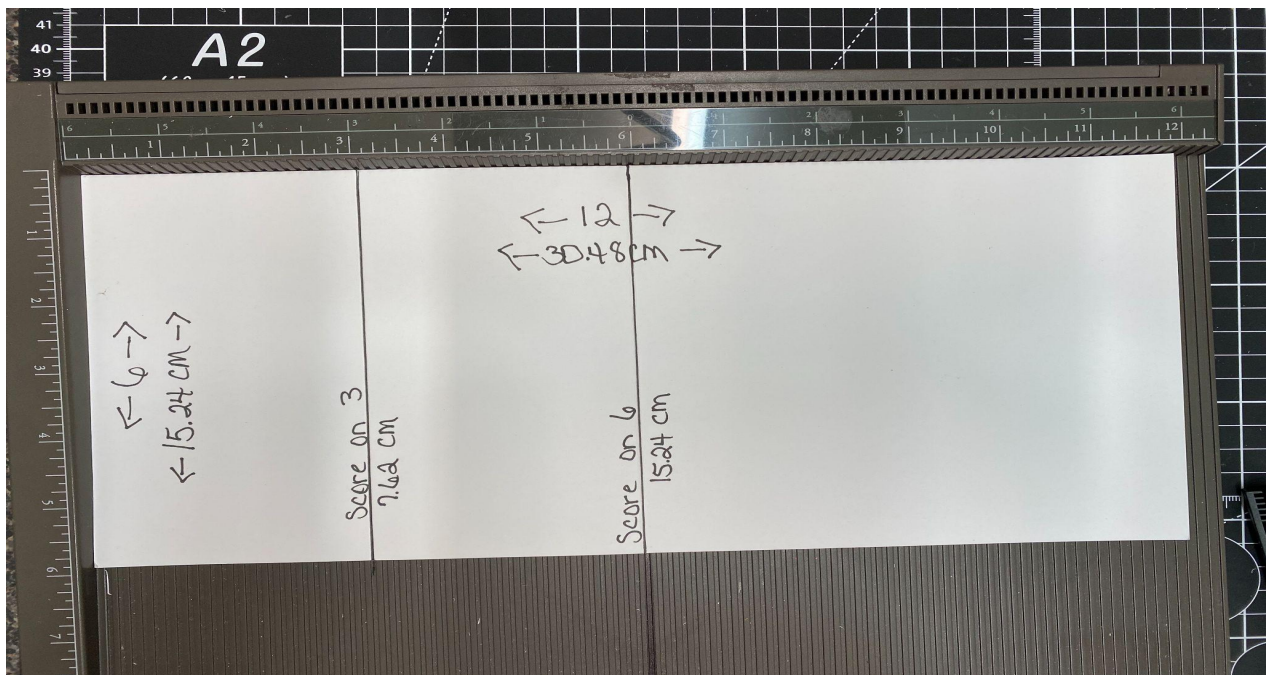
Gift Box

- Gold Foil - 15.24 cm X 15.24, 7.94 cm Circle, 1.91 X 7.62
- DSP - Floral 14.61 cm X 14.61 cm, Gold Stripe 5.08 cm X 15.24, 7.62" Circle
- Evening Evergreen Card Stock - 18.10 cm X 18.10 cm score on 1.27 cm all the way around, 18.42 cm X 18.42 cm score on the 1.27 cm all the way around.

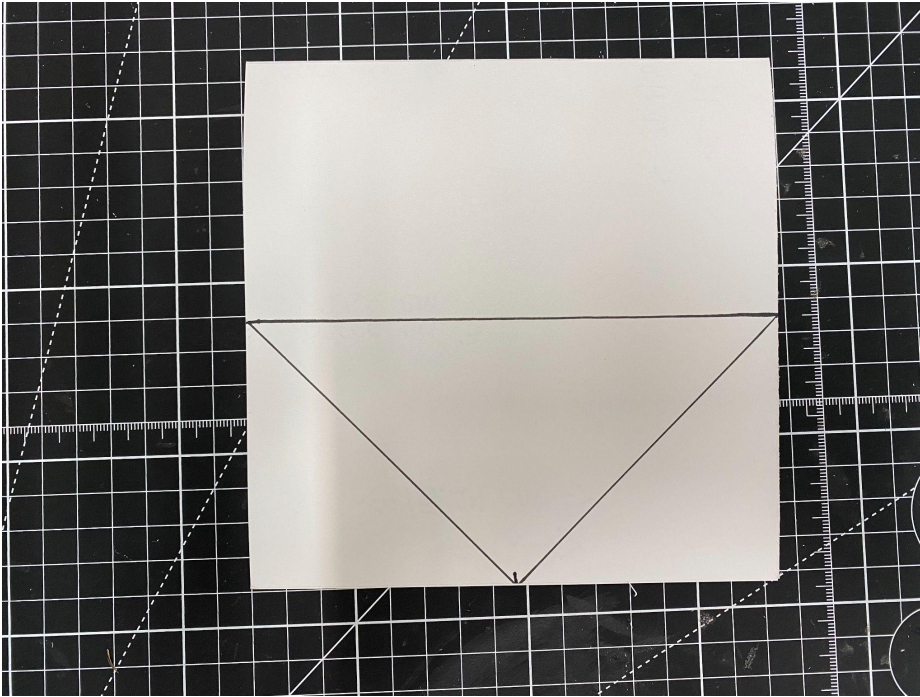
*See above about what circle dies I used.

Instructions

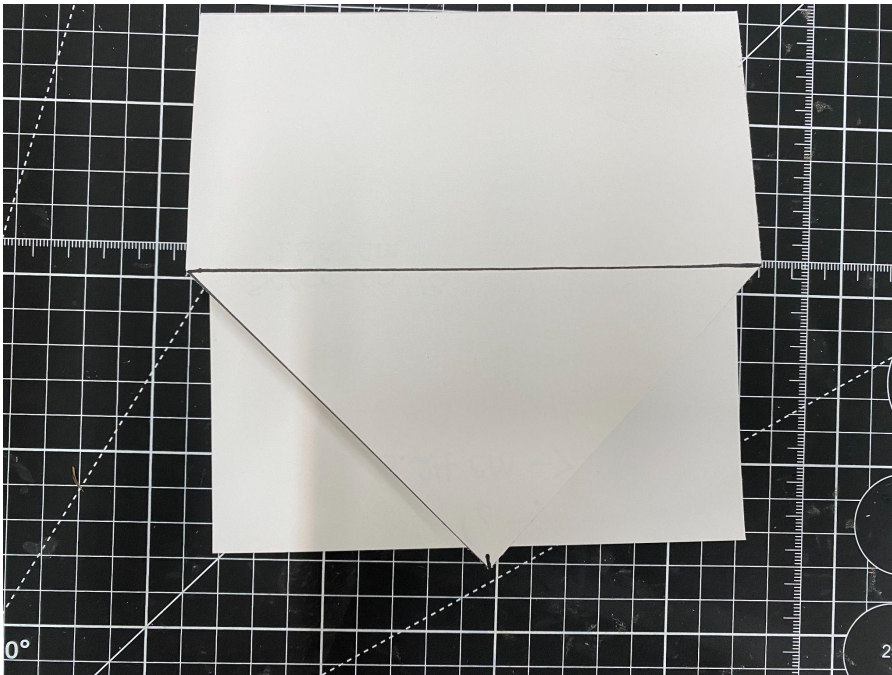
- Take the scored card base



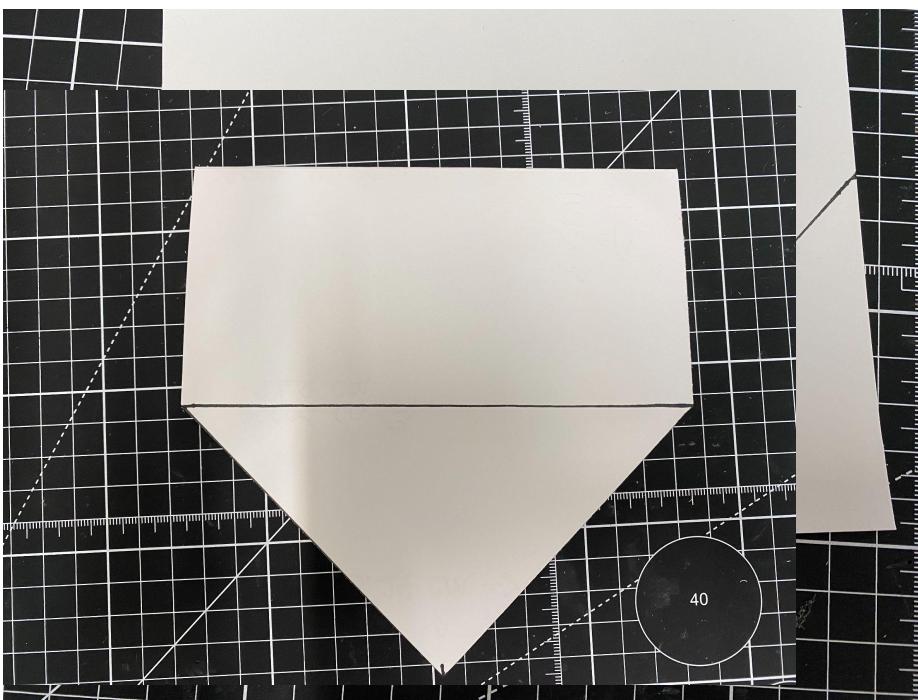
- With the 3" section facing you, make a tic mark in the middle on 3, then measure from the end of the left end of the score mark down to the tic mark and then the same on the right side.



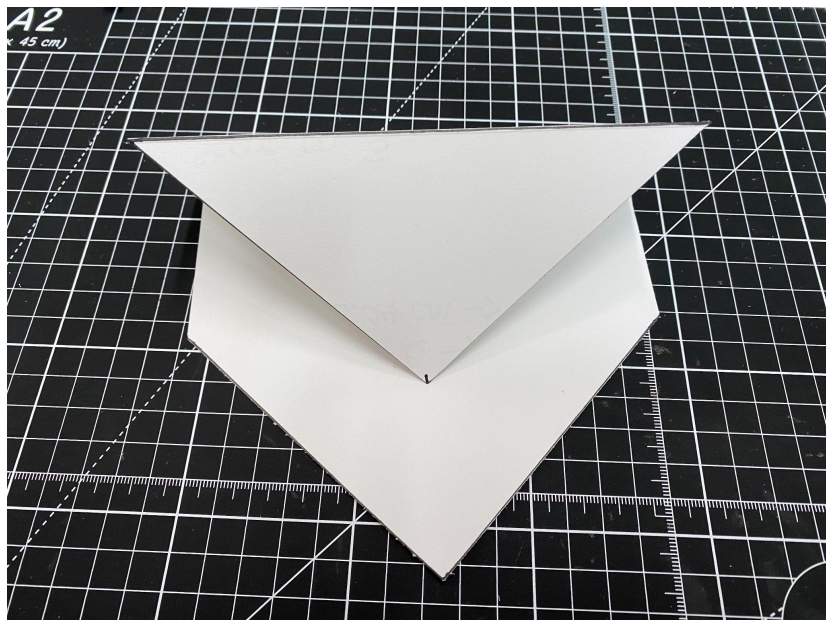
- Now, line up those marks in your trimmer and remove it.



- Next, just lay the section your just trimmed over the inside section and trace where you just cut and then use the trimmer and remove it too.



- Now, fold and burnish score marks.



- Now it's time to decorate! Starting on the front, add a Stripe DSP square, a

Gold Foil square and a Floral DSP square. Stack on top of each other using Seal.

- Cut one of the leaf stems out of Gold Foil and it goes behind all the other decorations on the front.
- Stamp the 2 X 2 ½ piece of Basic White Card Stock with Evening Evergreen Ink using the background stamp. I stamped it all over. I duck tailed the end of mine using the Banner Punch that's retired, but if you don't have this punch, just do it by hand by snipping down the middle of the end of this piece and then from the end left corner to the center snip then the same on the right side. Add to squares using Dimensionals. Place a little off centered to the left.
- Stamp a large flower with Polished Pink, two of the next sized flowers with Pale Papaya and an assortment of leaves using Evening Evergreen Ink and arrange and attach to squares. Use glue on some pieces and Dimensionals on others to give it a good 3D effect.
- Add a sentiment stamped label. Stamp sentiment using Evening Evergreen Ink. Attach with Dimensionals.
- Add bow and gems.
- Add the Gold Foil and DSP pieces behind the Diamond section using Seal



Inside

- Add the Gold Stripe DSP square, the Gold Foil square and the Floral DSP Square to the Diamond section. All on top of each other use Seal
- Cut the 2 ¾ X 2 ¾ Gold Stripe DSP square in half point to point. Then adhere half to one side above the diamond section and the other half to the other side. If you use the stripe DSP, the stripes will be going one way on one and the other way on the other. I personally liked it like this but if you don't, cut two of these squares. Use Seal to attach
- Add the Gold Foil and Floral DSP pieces to the section above the Gold Stripe section. Use Seal
- Cut the Basic White Square in half point to point and attach to the top section using Seal. This is where you can personalize the card.

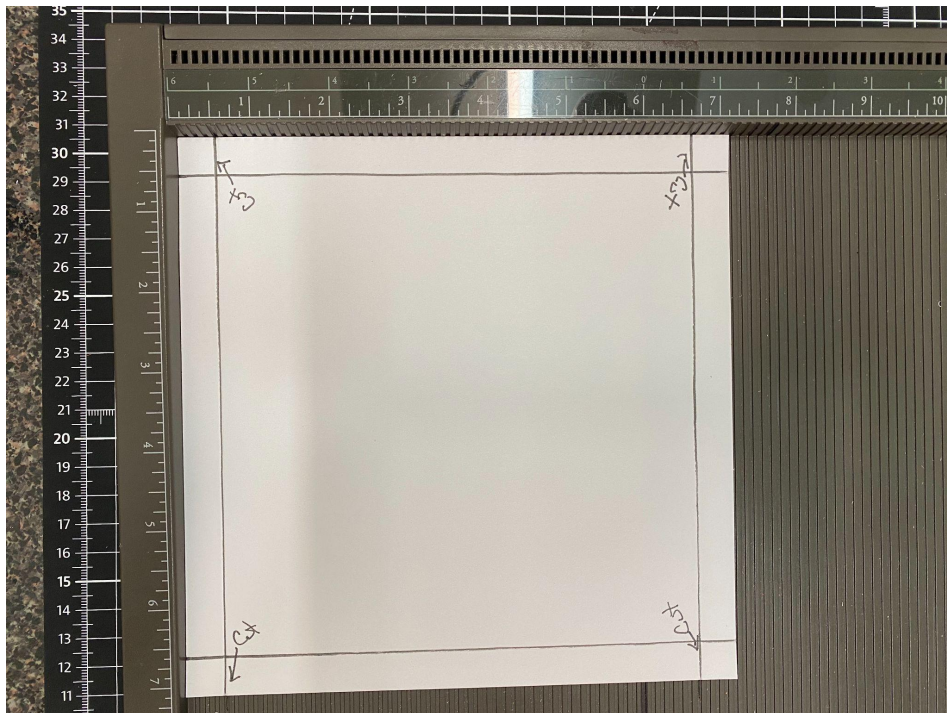


- Going back to the diamond section, Glue the circle pair together and attach to the diamond section using Dimensionals. Off center it a little towards the bottom point.
- Stamp one of the next to the largest flowers using the Polished Pink and a leaf using Evening Evergreen. Glue the leaves to the back of the flower and then add it to the circle using Dimensionals.
- The lower point of the front diamond section should hold behind the circle section of the inside diamond section.

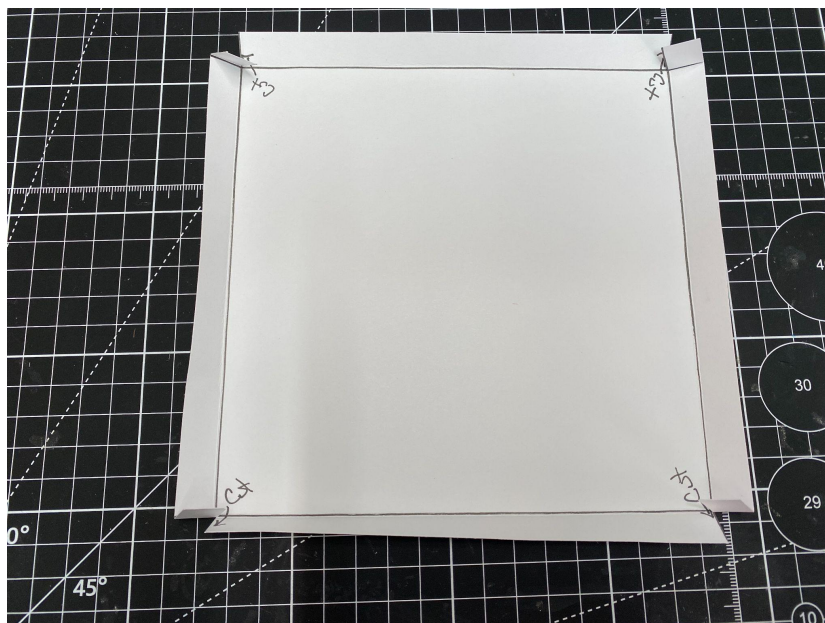


The Gift Box

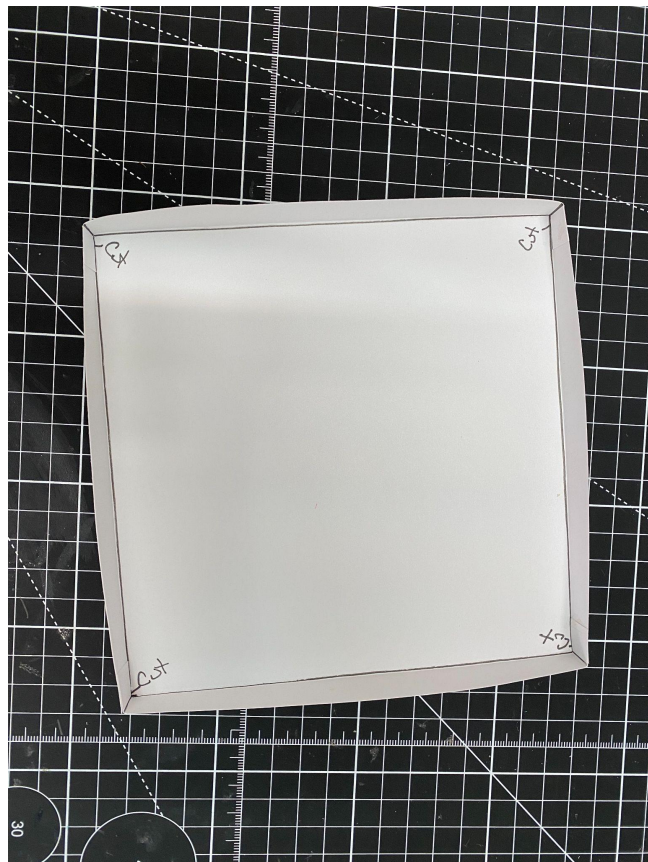
- Take the two scored Evening Evergreen squares. One is $\frac{1}{8}$ " larger than the other. The $7 \frac{1}{4}$ square is the top. At opposite ends, cut on the score line on both sides down to the first intersecting score line.



- Then fold and burnish the score lines



- Glue the tabs back behind the sides.



- Do the top and the bottom the exact same way
- Decorate the top



- Add the Floral DSP square to the Gold Foil square using Seal, then add the set to the box top using glue, making sure the piece is stuck well and the glue is all spread out. I put the top face down on my work space and then took my fingers and ran all around back and forth until I thought it was enough.
- I duck tailed the Gold Stripe DSP piece and then added it to the box front. I placed it off centered to the left. I used Seal to attach it to the squares.
- I die-cut one of the large leaf stems out of Gold Foil and attached it with glue back behind the circle disc and flowers.
- I glued the circle discs together and then added to the top front using Dimensionals.
- I stamped one large flower using Polished Pink Ink and one next to the largest flowers using Pale Papaya Ink and two sets of leaves using Evening Evergreen Ink and arranged them on the top front. I used glue for some pieces and Dimensionals on other pieces giving it the 3D look.
- I stamped the sentiment with Evening Evergreen Ink and attached the sentiment label on with glue
- I added a bow and gems

**I heat embossed the four little dots in the middle of the largest flower.





Expressions in Ink

Double Z Card by
Jan Mansor Brown
www.janbcards.com

[Click Here](#) to
Shop with Jan
Mansor Brown in
the UK.



Products used

[Click here](#) to shop with Jan Mansor Brown in the UK

BUNDLE

Expressions in Ink

CARDSTOCK

Basic White

Pale Papaya

Pear Pizzazz

ADHESIVES

Tombow Multi Purpose Liquid Glue

Stampin' Dimensionals

Glue Dots

DSP & EMBELLISHMENTS

Expressions in Ink Designer Series Paper

Gold Foil

All Squared Away Stamp Set - small sentiment on front of card

Inspired Thoughts Stamp Set - sentiment inside the card

Brilliant Wings Dies

Elegant Faceted Gems

Bumblebee Trinkets

COLOURING

Pear Pizzazz Ink Pad

Pale Papaya Ink Pad

Clear Wink of Stella Glitter Brush

TOOLS

Cut & Emboss Machine

Paper Trimmer

Paper Snips

Bone Folder

Layering Circle Dies

If you live in the United Kingdom, the Netherlands, France, Germany or Austria, and don't have a demonstrator you work with, please email me if you would like a copy of the current catalogue. janb@janbcards.com



Measurements

IMPERIAL & METRIC (for A4 Cardstock)

Pale Papaya Cardstock

4 $\frac{1}{8}$ " x 11 $\frac{1}{2}$ " (10.5cm x 29.2cm) scored and folded at 2 $\frac{7}{8}$ " & 5 $\frac{3}{4}$ " (7.3cm & 14.6cm)

1 $\frac{1}{8}$ " x 11 $\frac{1}{2}$ " (2.8cm x 29.2cm) scored and folded at 2 $\frac{7}{8}$ " & 5 $\frac{3}{4}$ " (7.3cm & 14.6cm)

Scrap for layering circular sentiment

Basic White Cardstock

Main card, two small panels, middle layer - 2 pieces 2 $\frac{5}{8}$ " x 3 $\frac{7}{8}$ " (6.7cm x 9.8cm)

Main card, large panel, middle layer - 5 $\frac{1}{2}$ " x 3 $\frac{7}{8}$ " (14cm x 9.8cm)

Narrow strip, two small sections, middle layer - 2 pieces $\frac{7}{8}$ " x 2 $\frac{5}{8}$ " (2.2cm x 6.7cm)

Narrow strip, long section, middle layer - $\frac{7}{8}$ " x 5 $\frac{1}{2}$ " (2.2cm x 14cm)

Scraps for flowers and sentiment

Expressions in Ink Designer Series Paper

Main card, front small panel, top layer Design 1 - 2½" x 3¾" (6.4cm x 9.5cm)

Main card, large panel, top layer Design 1 - 5⅜" x 3¾" (13.7cm x 9.5cm)

Narrow strip, two small sections, top layer Design 2 - 2 pieces ¾" x 2½" (1.9cm x 6.4cm)

Narrow strip, long section, top layer Design 2 - ¾" x 5⅜" (1.9cm x 13.7cm)

Gold Foil

Scraps for butterfly, if needed

IMPERIAL (for Letter-size Cardstock)

Pale Papaya Cardstock

4¼" x 11" scored and folded at 2¾" & 5½"

1⅞" x 11" scored and folded at 2¾" & 5½"

Scrap for layering circular sentiment

Basic White Cardstock

Main card, two small panels, middle layer - 2 pieces 2½" x 4"

Main card, large panel, middle layer - 5¼" x 4"

Narrow strip, two small sections, middle layer - 2 pieces ⅞" x 2½"

Narrow strip, long section, middle layer - ⅞" x 5¼"

Scraps for flowers and sentiment

Expressions in Ink Designer Series Paper

Main card, front small panel, top layer Design 1 - 2⅜" x 3⅞"

Main card, large panel, top layer Design 1 - 5⅞" x 3⅞"

Narrow strip, two small sections, top layer Design 2 - 2 pieces ¾" x 2⅜"

Narrow strip, long section, top layer Design 2 - ¾" x 5⅞"

Gold Foil

Scraps for butterfly, if needed



Instructions

- 1). Stamp and die-cut flowers on Basic White using Pale Papaya Ink and leaves using Pear Pizzazz Ink. NOTE: I stamped 1 very large flower, 2 medium-sized flowers, 2 small flowers, 2 sets of 3 very small flowers, one pair of leaves and one single leaf.
- 2). Use the Wink of Stella brush to “wipe” the edges of all of the flowers and leaves. Do this by holding the image in one hand with Wink of Stella in the other. Keep the brush under the image and bring it up to “wipe” the brush on all the cut edges.
- 3). Gently curl all flowers upwards and assemble them by using Dimensionals between each layer except the top two; glue them together with Tombow.
- 4). Use your Stamparatus and Pear Pizzazz Ink to stamp the inside sentiment on one of the two pieces of Basic White named: Main card, two

small panels, middle layer. NOTE: Make sure the sentiment is stamped high enough so it won't be covered when the large flower is adhered to the slim strip and the card is opened.

5). Stamp the small sentiment for the front of the card on a scrap of Basic White Cardstock. Die-cut using no. 2 straight cut die (approx 1 $\frac{3}{8}$ " or 3.4cm diameter) from the Layering Circle Dies.

6). Adhere sentiment to Pear Pizzazz scalloped circle die cut with no. 2 scallop die (approx 1 $\frac{1}{2}$ " or 3.7cm diameter) from the Layering Circle Dies.

7). Then adhere the sentiment to the Pale Papaya die-cut circle using no. 3 straight cut die (approx 1 $\frac{5}{8}$ " or 4cm diameter) from the Layering Circle Dies.

8). Score and fold both pieces of Pale Papaya. Burnish them well with your Bone Folder to make sure you get good crisp folds. NOTE: fold the large piece with the two small folds on the left-hand side and fold mountain, then valley. Fold the slim strip with the two small pieces on the right-hand side and fold mountain, then valley.

9). Adhere all Basic White middle layers in place on the two pieces of folded Pale Papaya and then adhere all Designer Series Paper top layers in place. NOTE: make sure all middle and top layers are adhered to the same side of the Pale Papaya card base and slim strip.

10). To adhere the slim strip to the card base, you need to have the long section of the card base on your right-hand side and the long section on the slim strip on your left-hand side. Lay the card base out flat and lay the slim strip out flat on top of the card base.

11). Flip the slim strip over so the reverse side is facing up. Measure up from the bottom edge of the card base approx $\frac{3}{4}$ " or 1.9cm. NOTE: you can choose where you want your slim strip to go as long as it is straight. For example, you may wish to have your slim piece in the middle of your card or maybe at the top of your card. BUT before you adhere the slim piece in position, check to make sure it won't hide the sentiment inside your card

and that any images you are adhering onto the slim strip won't go over the top or bottom edge more than your envelope will allow.



12). Using a pencil, mark on the back of the slim strip where the Designer Series Paper starts and finishes on the first slim panel of the card base.

13). Again, using a pencil, mark on the back of the slim strip where the Designer Series Paper finishes at the end of the big card base panel. Also make a pencil mark on the slim strip about ¼" or 0.6cm on the right-hand

side of the last score line. NOTE: the areas you have just marked are where you can safely add glue to adhere the slim strip to the card base.

14). Put Tombow Glue on the back of the slim strip within the two areas you have marked with pencil.

15). With the aid of your Grid Paper, adhere the slim strip straight i.e. level and in position. Before Tombow has a chance to dry, close your card to make sure you have adhered the slim strip in the correct place and your card closes nicely.

16). Adhere both flowers on the strip using Dimensionals.

17). Using Tombow, adhere the small round sentiment in place, making sure it doesn't go so far off your card so that it won't fit in your envelope. NOTE: I allowed mine to go over less than ¼" or 0.5cm (I use A4 cardstock).

18). Using some scraps of Gold Foil, I die-cut one small and one medium-sized butterflies from the Brilliant Wings Dies. I adhered both butterflies in position by putting Tombow glue along the body and the folded their wings up.

19). My final two touches were adding an Elegant Faceted Gem in the centre of both flowers and finally, I adding a Bumblebee Trinket to each flower. NOTE: I always put a Glue Dot on the back of the Bumblebee and a small dot of Tombow on the card where I'm going to place the Bumblebee.

SPECIAL NOTE: my plan is to make a video showing how to make a Double Z Card before this PDF is available to purchase but it will NOT show this specific design - this design will ONLY be available to crafters who purchase this PDF. To find my video, go to YouTube and type JanB No. 598 Double Z Card in the search bar and it will find the video.

I hope you enjoy this tutorial. If you have any questions, please email me at janb@janbcards.com

Jan Mansor Brown <https://janbcards.stampinup.net>



Expressions In Ink

Julie Gilson, United States
www.stampingala.com



Julie Gilson, Stampingala.com
Images@Stampin' Up!

PRODUCTS USED

[Click here](#) to Shop with Julie Gilson in the United States

Bundle

Expressions in Ink

DSP & Embellishments

Expressions in Ink DSP

Genial Gems

Simply Elegant Trim

Cardstock

Shaded Spruce

Gold & Rose Gold Metallic

Basic White

Expression In Ink DSP

Adhesives

Seal

Multi-Purpose Glue

Dimensionals

Glue Dots

Coloring

VersaMark Ink

Metallic Embossing Powders

Tools

Stitched Stars Dies

Messages Dies

Timeworn Type 3D Embossing Folder

Heat Tool

Simply Scored Scoring Tool

Stampin' Cut & Emboss Machine

MEASUREMENTS

Imperial

Shaded Spruce, 11 X 4- $\frac{1}{4}$, score at 5- $\frac{1}{2}$

Gold & Rose Gold Metallic Specialty Paper, 5 X 3- $\frac{3}{4}$

Basic White, 4- $\frac{7}{8}$ X 3- $\frac{5}{8}$

Expressions in Ink DSP scrap for stars

Gold & Rose Gold Metallic Specialty Paper scrap for stars and swirls

Basic White, $\frac{3}{4}$ X 3- $\frac{3}{4}$, sentiment

Basic White, 5- $\frac{1}{8}$ X 3- $\frac{7}{8}$

Basic White, 5 X 3- $\frac{3}{4}$

Metric

Shaded Spruce, 28 X 11, score at 14

Gold & Rose Gold Metallic Specialty Paper, 12- $\frac{3}{4}$ X 9- $\frac{1}{2}$

Basic White, 12- $\frac{1}{2}$ X 9- $\frac{1}{4}$

Expressions in Ink DSP scrap for stars

Gold & Rose Gold Metallic Specialty Paper scrap for stars and swirls

Basic White, 2 X 9- $\frac{1}{2}$, sentiment

Basic White, 13 X 10

Basic White, 12- $\frac{3}{4}$ X 9- $\frac{1}{2}$

INSTRUCTIONS

Card Base

- Shaded Spruce, 11 X 4- $\frac{1}{4}$, score at 5- $\frac{1}{2}$.
- Basic White, 4- $\frac{7}{8}$ X 3- $\frac{5}{8}$, stamp the “dot” image a few times on the upper left side and the lower right side with VersaMark Ink. Sprinkle with Gold Embossing Powder and heat with the Heat Tool. Next, emboss with the Timeworn Type 3D Embossing Folder. Layer on a piece of Gold Metallic Specialty Paper, 5 X 3- $\frac{3}{4}$. Adhere to the card base. (Note: I cut the gold stars and the swirls out of this layer before adhering to the Basic White piece to make better use of the Gold Metallic paper.)



Julie Gilson, Stampingala.com
Images@Stampin' Up!

- Adhere one of the Swirls in the upper left as shown.
- Die cut the Expressions in Ink stars using the Stitched Stars Dies. Adhere the large star to the card front.
- Adhere the Gold star with Dimensionals to the card front.
- Adhere the Swirl to the lower right.

- Adhere the small Expressions in Ink star to the card front.
- Basic White, $\frac{3}{4}$ X $3\frac{3}{4}$, stamp the sentiment with VersaMark Ink. Sprinkle with Gold Embossing Powder and heat with the Heat Tool. Die cut using the Messages Die. Adhere to the card front with Dimensionals.
- Tie a double bow with the Simply Elegant Trim. Adhere to the card front with a Glue Dot.
- Adhere several Genial Gems to the card front.

Inside of the Card

- Layer a piece of Basic White, 5 X $3\frac{3}{4}$, onto an additional piece of Basic White, $5\frac{1}{8}$ X $3\frac{7}{8}$. Adhere to the inside of the card.
- Die cut the stars and swirl and adhere to the inside of the card as shown.



Please enjoy the tutorial. If you have any questions please ask.

Julie Gilson

www.stampingala.com

If you live in the United States, and do not have a demonstrator you work with and would like a catalog, please email me at julie48188@gmail.com.



Carte multi-couches “Merci”

Marine Wiplier, France

www.marineetstamp.com



Products used

[Click Here](#) to Shop with Marine Wiplier in France

STAMP SET

Set de tampons

Artistically Inked

Set de tampons Encre d'artiste

CARDSTOCK

PAPIERS

Basic White

Blanc simple

COLOURING

ENCREURS

Polished Pink

Pierre Rose Polie

Mint Macaron

Macaron à la menthe

DSP & EMBELLISHMENTS

Papiers & Embellissements

Expression in Ink DSP

Papier de la série Design Encre animée

Expression in Ink Ephemera Pack

Lot éphémère Encre animée

ADHESIVES

Dimensionals

Glue dots

TOOLS

Artistic Dies

Poinçons Découpes d'artiste

Paper trimmer

Coupe-papier

Stampin' Cut & Emboss Machine

Machine de découpe et gaufrage

(If you live in France, don't have a demonstrator you work with and would like a catalogue please email me at marineetstamp@gmail.com)

Si vous vivez en France, que vous n'avez pas de démonstratrice et que vous souhaitez un catalogue, contactez-moi à l'adresse mail marineetstamp@gmail.com

Measurements

Mesures

MESURES

- Base card – A5 Cardstock Basic White - Folded in two
Base de carte - Papier A4 Blanc simple - Pliée en deux
 - 21 cm x 14,9 cm
- DSP Piece
Rectangles de papier imprimé (en inch)
 - 4' x 3'
 - 4' x 3' ½
 - 4' x 4'
 - 4' x 4' ½
 - 4' x 5'

1. Cut 5 pieces on the DSP sheet of your choice and tear a band.
Découpez 5 rectangles du papier imprimé de votre choix et déchirez une bande au bas de chaque rectangle.



2. With a bone folder, fold the bottom of the paper.
Avec un plioir en os, cornez le bas du papier que vous venez de déchirer.



3. Glue the strips one on top of the other from the largest to the smallest
Collez les bandes l'une sur l'autre, de la plus grand à la plus petite.



4. Cut 1 big flower + 2 little flowers stamped in Polished Pink, leaves in Mint Macaron and put them at the bottom right of the smallest band.
Finish your card by stamping a sentiment at the bottom and place some sequins.

Tamponnez en Pierre Rose polie et découpez 1 grande fleur + 2 petites, les feuilles en Macaron à la menthe et positionnez-les au bas droit de la plus petite bande.

Terminez votre carte en tamponnant un sentiment sur le bas et placez quelques sequins autocollants.





Enjoy the tutorial. Any questions please ask.

Marine Wiplier

<https://www.marineetstamp.com>



Artistically Inked Best Wishes Card

Jessica Brigden, USA

www.jessbcreativecardiology.com



Products used

[Click Here](#) to Shop with Jessica Brigden in the U.S.

BUNDLE

Artistically Inked Bundle

CARDSTOCK

Basic White
Evening Evergreen
Pear Pizzazz

INK

Evening Evergreen
Pear Pizzazz
Polished Pink

DSP & EMBELLISHMENTS

Expressions in Ink DSP
Expressions in Ink Ephemera Pack
Gold Foil Paper

ADHESIVES

Mini Glue Dots
Stampin' Dimensionals
Stampin' SEAL

TOOLS

Stampin' Cut and Emboss Machine

(If you live in the United States, don't have a demonstrator you work with and would like a catalogue please email me jessb@creativecardiology.com)

Measurements

METRIC - (For A4 cardstock only)

- Card Base – Pear Pizzazz Cardstock
 - 14.9 cm x 21 cm
- Evening Evergreen Cardstock
 - 10 cm x 14.4 cm
 - 8 cm x 8 cm
- Expressions in Ink DSP
 - 9.5 cm x 13.9 cm
- Basic White Cardstock
 - 7 cm x 7 cm
 - 9 cm x 9 cm piece for stamped & die cut flower & leaves
- Gold Foil
 - 7 cm x 14.4 cm

IMPERIAL - (For letter size cardstock only)

- Card Base – Pear Pizzazz Cardstock
 - 5 ½" x 8 ½"; score at 4 ¼" and fold
- Evening Evergreen Cardstock
 - 4" x 5 ¼"
 - 3 ¼" x 3 ¼"
- Expressions in Ink DSP
 - 3 ¾" x 5"
- Basic White Cardstock
 - 3" x 3"
 - 3 ½" x 3 ½" piece for stamped & die cut flower & leaves
- Gold Foil
 - 2 ½" x 5 ¼"

Instructions

- Cut each piece of Cardstock listed in the measurements above.
- Fold Pear Pizzazz Cardstock in half to form card base.
- Adhere Evening Evergreen cardstock layer to the card base.
- Adhere Expressions in Ink DSP layer to the card base.
- Adhere Evening Evergreen cardstock square to the card base with Stampin' Dimensionals.
- Stamp sentiment onto Basic White cardstock square using Evening Evergreen ink; adhere to the card base on top of the Evening Evergreen cardstock square.
- Die cut large leaf from Gold Foil paper and adhere to the card front using Mini Glue Dots.
- Stamp large flower image & flower center onto Basic White cardstock using Polished Pink ink and die cut; adhere to card front with Stampin' Dimensionals.
- Stamp leaf images onto Basic White cardstock using Pear Pizzazz ink and die cut; apply Mini Glue Dots to the leaves and tuck them under the flower to secure.
- Embellish card front with three sequins from the Expressions in Ink Ephemera pack.



Enjoy the tutorial. Any questions please ask.

Jessica Brigden

<https://jessb.stampinup.net>



Alcohol and Ink Card

Jackie Bultje, Canada

www.thepamperedstamper.com



Products used

[Click Here](#) to shop with The Pampered Stamper

Expressions in Ink stamp set

CARDSTOCK

Basic White Thick Cardstock, vellum

COLOURING

Mango Melody Blends
Daffodil Delight Blends
Melon Mambo Blends
Polished Pink Blends
Melon Mambo Classic Ink

DSP & EMBELLISHMENTS

Expressions in Ink Ephemera Pack
Simply Elegant Trim

ADHESIVES

Multi Purpose Liquid Glue
Mini Glue Dots
Stampin' Dimensionals

TOOLS

Paper Trimmer
Stampin' Cut & Emboss Machine
Stitched Nested Labels Dies (retired)
99% Rubbing Alcohol
Stampin' Spritzer
Water Painter

(If you live in Canada, don't have a demonstrator you work with and would like a catalogue please email me at jackiebultje@gmail.com)

Measurements

METRIC - (For A4 cardstock only)

- Card Base – thick basic white cardstock 29.7 cm by 10.5 cm scored at 14.9 cm
 - Vellum cardstock 10.5 cm by 14.9 cm
 - Scrap of Basic White for sentiment. I used the Stitched Nested Labels die which is sadly retired but I didn't have a different die that would coordinate nicely with the gold ephemera details in behind.

IMPERIAL - (For letter size cardstock only)

- Card Base – Basic White Thick Cardstock 11" by 4 ¼" scored at 5 ½"
- Vellum Cardstock 4 ¼" by 5 ½".

Instructions

1. Scribble all over the vellum in patches using all the colours of Blends listed, it is ok to overlap.
2. Put a small amount of rubbing alcohol in a small dish. Dip your water painter in the rubbing alcohol and allow to drip onto your scribbled vellum. Watch the magic happen! The Blends will begin to dilute and spread. If you need the colour to bleed and blend more, then give a gentle spritz of alcohol using your Stampin' Spritzer. Allow to dry completely. I like to make several panels at a time so that I can then choose the one that I like the most.
3. After your vellum has completely dried, sponge the back with liquid multipurpose adhesive and adhere to your card front.
4. Stamp sentiment in Melon Mambo on small stitched rectangle (or better yet, stamp on scrap of Basic White and THEN cut out with stitched rectangle die).
5. Add your gold pieces from the Expressions in Ink Ephemera Pack. I used a silicone mat, a sponge wedge and liquid multipurpose glue to adhere the thin oblong shapes. I used glue dots to adhere the leaves to the back of the sentiment piece.
6. Loop the gold cording to the back of the sentiment panel and then adhere the whole thing to your card with dimensionals.

7. Finish your card by adding the sequins that came in the Ephemera Pack.
8. Stamp the flower from the Artistically Inked stamp set in Melon Mambo on the bottom right corner. Stamp centre of flower in Mango Melody.



Enjoy the tutorial. Any questions please ask.

www.thepamperedstamper.com



“Thank You” Card

Kayla Renee, Australia

www.kaylamccreadie.com



Products used

[Click Here](#) to Shop with Kayla Renee in Australia

BUNDLE

Artistically Inked Bundle

CARDSTOCK

Crumb Cake

Basic Black

Basic White

Expressions In Ink Specialty

Designer Series Paper

Gold & Rose Gold Metallic Specialty
Paper

COLOURING

Versamark

DSP & EMBELLISHMENTS

Simply Elegant Trim

Bumblebee Trinkets

Expressions In Ink Ephemera Pack

ADHESIVES

Multi Purpose Liquid Glue

Dimensionals

Mini Glue Dots

TOOLS

Basics Embossing Powder

Wink of Stella Glitter Pen

(If you live in Australia, don't have a demonstrator you work with and would like a catalogue please email me at kayla@kaylamccreadie.com)

Measurements

METRIC - (For A4 cardstock only)

- Card Base – Crumb Cake
- Basic Black Cardstock
 - 14.3cm x 9.9cm x 2 pieces
 - 9.7cm x 2.8cm
 - Scrap piece for sentiment
- Expressions In Ink Designer Series Paper
 - 14.1cm x 9.7cm
 - 14.1cm x 1.2cm
- Basic White
 - 14.1cm x 9.7cm
- Rose Gold & Gold Metallic Specialty Paper
 - Scrap piece for die cut

IMPERIAL - (For letter size cardstock only)

- Card Base – Crumb Cake
- Basic Black Cardstock
 - 4" x 5 1/4" x 2 pieces
 - 4" x 1"
 - Scrap piece for sentiment
- Expressions In Ink Designer Series Paper
 - 3 7/8" x 5 1/8"
 - 3 7/8" x 1/2"
- Basic White
 - 3 7/8" x 5 1/8"
- Rose Gold & Gold Metallic Specialty Paper
 - Scrap piece for die cut

Instructions

1. Die cut the large vine from the gold metallic speciality paper and set this aside.
2. Cut the layer of Expressions in Ink Designer Series Paper and take the smaller strip of Basic Black Cardstock and adhere the die cut vine underneath where these will meet as shown in the picture. Adhere the Basic Black strip over the top. Wrap some of the Simply Elegant Trim around where the cardstock meets the designer paper and tie a bow. Adhere this piece to a larger layer of Basic Black Cardstock. Adhere to the Crumb Cake card base with Stampin' Dimensionals.
3. Take a scrap of Basic Black cardstock and using the 'thanks' sentiment, stamp in Versamark Ink and heat emboss in white. Trim this piece down and cut the ends on an angle. Adhere to the card where shown with Stampin' Dimensionals.
4. Embellish with some vine/leaves from the Expressions in Ink Ephemera Pack, adding them to the left of the sentiment with some Mini Glue Dots. Embellish a Bumblebee Trinket and some of the sequins from the Expressions in Ink Ephemera Pack.
5. To decorate the inside of the card I have added a strip of the Expressions in Ink paper to the bottom of the card and added some Elegant Trim before adhering this to the layer of Basic Black. I then added a left-over piece from the Expressions in Ink Ephemera Pack.



Enjoy the tutorial. Any questions please ask.

Link to the video tutorial: <https://youtu.be/PoCQSGCJC-Q>

Kayla Renee

www.kaylamccreadie.com



Artistically Inked Bright Birthday Wishes

Jeanna Bohanon, USA

www.stamptimesomewhere.com



Products used

[Click Here](#) to Shop with Jeanna Bohanon in the U.S.

BUNDLE

Artistically Inked

CARDSTOCK

Daffodil Delight
Granny Apple Green
Bermuda Bay
Basic White
Basic Black

COLORING

Polished Pink Classic Ink
Bumblebee Classic Ink
Granny Apple Green Classic Ink
Bermuda Bay Ink
Memento Tuxedo Black
Versamark Ink

DSP & EMBELLISHMENTS

Pattern Party DSP
21-23 In Color Jewels
Playful Pets Trim Combo Pack
White Stampin' Emboss Powder

ADHESIVES

Multi Purpose Liquid Glue
Dimensionals
Glue Dots

TOOLS

Stitched Greenery Die
Scalloped Contours Dies
Banners Pick A Punch
Heat Tool
Stampin' Cut & Emboss Machine

(If you live in the United States, don't have a demonstrator you work with and would like a catalog please email me j_bohanon1003@yahoo.com)

Measurements

IMPERIAL -

- Daffodil Delight
 - Card Base 5 ½" x 8 ½" scored at 4 ¼" for a 4 ¼" x 5 ½" card
- Granny Apple Green
 - Layer 1 - 4" x 5 ¼"
- Bermuda Bay
 - Scalloped Layer - 3 ¾" x 5"
- Basic White
 - Florals 4 ¼" x 5"
- Basic Black
 - Sentiment - ½" x 3 ¾"
- Party Party Designer Series Paper
 - Strip - 1" x 4"
- Twine - approximately 12"

METRIC -

- Daffodil Delight
 - Card Base 14cm x 21.5cm scored @ 10.8cm for a 10.8cm x 14cm card
- Granny Apple Green
 - Layer 1 - 10.2cm x 13.3 cm
- Bermuda Bay
 - Scalloped Layer - 9.5cm x 12.7cm
- Basic White
 - Florals 10.8 x 12.7cm
- Basic Black
 - Sentiment - 1.3cm x 9.5cm
- Party Party Designer Series Paper
 - Strip - 2.5cm x 10.2cm
- Twine - approximately 30cm

Instructions

1. Emboss the Granny Apple Green layer with the Stitched Greenery Die, and adhere to the front of the card. Adhere the Pattern Party Designer Series Paper about 1 ½" (3.8cm).
2. Die cut the large scallop from Bermuda Bay cardstock with the Scalloped Contour Die.
3. Stamp the large watercolor image repeatedly with Bermuda Bay ink on the Bermuda Bay large scallop. Adhere to the card with Stampin' Dimensionals.
4. Stamp the large flower image in Polished Pink, adding the center detail with Memento Ink on the Basic White Cardstock. Stamp the smaller flower image 2 times in Daffodil Delight Ink, reinking each time, and also the leaves 2 times in Granny Apple Green. Die cut all images with the coordinating dies.
5. Add the flower and leaf images to the Bermuda Bay layer using Stampin' Dimensionals.
6. Stamp the "Happy Birthday" sentiment in Versamark Ink on the Basic Black strip and heat emboss with the White Embossing Powder. Punch each end with the Banners Pick A Punch.
7. Tie a bow with the Black and White Twine and adhere to the back of the sentiment with a Glue Dot. Add the sentiment to the card using mini Stampin' Dimensionals.
8. Embellish with the '21-'23 In Color Gems.

Enjoy the tutorial. Any questions please ask.

Jeanna Bohanon

j_bohanon1003@yahoo.com



Hello Card

Linda Dalke, Australia

www.lhiggins.blogspot.com



Products used

[Click Here](#) to Shop with Linda Dalke in Australia

BUNDLE

Artistically Inked Bundle

CARDSTOCK

Basic White Thick (Card base)
Pale Papaya
Basic White scrap (to cut diecut)

Basic White strip (to stamp sentiment)

Pale Papaya Shimmer Vellum

COLOURING

Pale Papaya Classic Ink
Calypso Coral Classic Ink

DSP & EMBELLISHMENTS

Expressions in Ink 12" x 12" DSP
In Color Jewels
Pale Papaya Open Weave Ribbon

ADHESIVES

Dimensionals
Seal
Multipurpose Adhesive
Mini Glue dots

TOOLS

Artistic Dies
Scalloped Contours Dies
Detailed Trio Punch
Banners Pick-a-Punch
Blending Brushes
Stampin' Cut and Emboss Machine

(If you live in Australia, don't have a demonstrator you work with and would like a catalogue please email me at lindastampsau@gmail.com)

Measurements

METRIC - (For A4 cardstock only)

- Card Base – Basic White Thick Cardstock
 - 21cm x 14.8cm
- Pale Papaya Cardstock
 - 10cm x 14.3cm
- Basic White Cardstock – from which to cut diecut peach and leaves
 - scrap approximately 14.8 x 10.5cm
 - Strip approximately 1.9cm x 7cm (for sentiment)
- Expressions in Ink DSP - 4 pieces that are 6.5cm x 4.5cm (I used the gold striped paper and the reverse of the same sheet which is Pale Papaya. But you can choose whichever colours you prefer.
- Pale Papaya Shimmer Vellum scrap (from which to diecut Scalloped Rectangle)
 - scrap approximately 12cm x 8.5cm

IMPERIAL - (For letter size cardstock only)

- Card Base – Basic White Thick Cardstock
 - 8-1/2" x 5-1/2"
- Pale Papaya Cardstock
 - 5-1/4" x 4"

- Basic White Cardstock – from which to diecut peach and leaves
 - Scrap approximately 5-1/2" x 4-1/4"
 - Strip approximately 3/4" x 2-3/4" (for sentiment)
- Expressions in Ink DSP - 4 pieces as follows:
 - 1-3/4" x 2-3/8"
- Pale Papaya Shimmer Vellum scrap (from which to diecut scalloped rectangle)
 - 5" x 3-1/2"

Instructions

- Fold White Card Base in half and set aside
- Use the Detailed Trio punch to round 2 corners of the 4 DSP pieces – the 2 rounded corners should be on opposite corners. Then arrange on the Pale Papaya panel and adhere:



- Cut scalloped Rectangle from the Pale Papaya Shimmer vellum. Then use a blending brush to colour the centre of your shimmer vellum piece with Calypso Coral ink.
- Use the large flower die to cut shape from the Basic White scrap, and adhere with Multipurpose glue (or fine tip glue if preferred) to one end of the Shimmer Vellum rectangle.
- Stamp the “Hello” sentiment on your white strip and then use the Banners Pick-a-Punch to flag the ends of the strip (or use scissors if you prefer). Ink around the strip with a sponge dauber and Pale Papaya ink. Adhere to the left-hand side of the base of the Shimmer Rectangle with dimensionals.
- Apply dimensionals behind the Scalloped Rectangle – hiding them behind the elements on the front of the panel. Attach to centre of the card base.
- Use Pale Papaya Incolor Jewels to either side of the sentiment.
- Tie a small bow and attach with glue dots in the lower corner of the rectangle
- Adhere Pale Papaya card front to the Basic White Card base.
- Your card is done! Enjoy!

Enjoy the tutorial. Any questions please feel free to contact me

Linda Dalke

www.lhiggins.blogspot.com

lindastampsau@gmail.com



Expressions In Ink

Narelle Farrugia
www.stamplicious.com



Products used

STAMP SET

Artistically Inked

CARDSTOCK

Basic White

Smoky Slate

Bermuda Bay

COLOURING

Memento Black Ink

Bermuda Bay Ink

Pool Party Ink

DSP & EMBELLISHMENTS

Basic Rhinestone

ADHESIVES

Multi Purpose Liquid Glue

Dimensionals

Fine Tip Glue Pen

TOOLS

Artistic Dies

Stampin' Cut Emboss Machine

Paper Snip Scissors

Paper Trimmer

Bone Folder

(If you live in Australia, don't have a demonstrator you work with and would like a catalogue please email me narellefarrugia@yahoo.com)

Measurements

METRIC - (For A4 cardstock only)

- Card Base – Smoky Slate Cardstock
 - 28cm x 10cm
- Basic White Thick Cardstock
 - 13cm x 9cm for inside of card
- Basic White Thick Cardstock for sentiment
 - 12cm x 1cm
- Bermuda Bay Cardstock
 - 10cm x 1cm to place behind front flap
 - 10cm x 9cm for inside of card
- Basic White Cardstock for die cuts

IMPERIAL - (For letter size cardstock only)

- Card Base – Smoky Slate Cardstock
 - 11" x 3 $\frac{7}{8}$ "
- Basic White Thick Cardstock
 - 5 $\frac{1}{4}$ " x 3 $\frac{5}{8}$ " for inside of card
- Basic White Thick Cardstock for sentiment
 - 4 $\frac{3}{4}$ " x $\frac{3}{8}$ "cm
- Bermuda Bay Cardstock
 - 3 $\frac{7}{8}$ " x $\frac{3}{8}$ " to place behind front flap
 - 3 $\frac{7}{8}$ " x 3 $\frac{5}{8}$ " for inside of card
- Basic White Cardstock for die cuts

Instructions



1. Score the Smoky Slate Cardstock base at 14cm and 10cm. Reinforce the creases.
2. Take the thin strip of Bermuda Bay Cardstock and adhere behind the folded front flap. Then adhere this piece to the main card base.
3. Take the large flower die from the Artistic Dies and Basic White Cardstock and run through the Stampin' Cut Emboss Machine twice. One die will be for the front of the card and the second one will be for inside the card.

4. Take your glue of choice - I used the Fine Tiip Glue Pen - and adhere the die cut to the front of the card. Make sure you place this so that it hangs over the fold on the front.
5. Stamp three flowers from the Artistically Inked Stamp Set - I stamped two in Bermuda Bay Ink and one in Pool Party Ink. Cut them out, add dimensionals to each and layer two over the die cut.



For the Inside of the Card - left side

1. Take the piece of Bermuda Bay Cardstock and stick to the inside of the card.

2. Take the Basic White die cut and either use as a whole piece or cut down the piece like I did. Adhere this piece down and add the flower on top of the die cut.



For the Inside of the Card - right side

3. Take the piece of Basic White Cardstock and stamp the water-coloured type background stamp in Bermuda Bay Ink. Wait for this to dry for about a minute.

4. Take your sentiment and ink it up with Black Memento Ink and stamp over the water-coloured background. Adhere this piece to the card base.
5. Add as much bling as you like to finish off your card.



Enjoy the tutorial. Any questions please ask.

Narelle Farrugia

www.stamplicious.com

narellefarrugia@yahoo.com



Happy Birthday in Pink

Jane Proffitt, USA

www.galfridaystamping.net



Products used

[Click Here](#) to Shop with Jane Proffitt in the U.S.

BUNDLE

Expressions in Ink Suite

Color & Contour Dies

CARDSTOCK

Polished Pink

Basic White

Acetate

Gold Foil Sheets

COLOURING

Polished Pink Ink Pad

DSP & EMBELLISHMENTS

Expressions in Ink DSP

Polished Pink Open Weave Ribbon

Pearl Basic Jewels

ADHESIVES

Multi Purpose Liquid Glue

Dimensionals

TOOLS

Paper Trimmer

Stampin' Up! Cut & Emboss Machine

(If you live in the United States, don't have a demonstrator you work with and would like a catalogue please email me galfridaystamping@yahoo.com)

Measurements

IMPERIAL - (For letter size cardstock only)

- Card Base – Polished Pink
 - 5 1/2" x 5 1/4" score at 1"
 - 5 3/8 x 4 1/8 for the inside of the card
 - Scrap to die cut the floral image
- Acetate
 - 5 1/2" x 4 1/4"
- DSP
 - 5 3/8" x 7/8
 - 5 1/2 x 2 1/2
- Gold Foil Sheet scrap to die cut leaves
- Basic White
 - 5 1/4 x 4 for the inside of the card

METRIC - (For A4 cardstock only)

- Card Base – Polished Pink
 - 13.9 cm x 13.4 cm score at 2.5
- Polished Pink for the inside
 - 13.6 cm x 10.5 cm
- Acetate
 - 14 cm x 10.8 cm
- DSP
 - 13.6 cm x 2.3 cm
 - 13.9 cm x 6.4 cm
- Basic White
 - 13.3 cm x 10.1 cm for the inside of the card

Instructions

1. Cut card base and fold and burnish score line.
2. Adhere the acetate to the underside of the flap making sure that it is even with the back of the card.
3. Add a strip of dsp to the 1" section at the top of the card. Take the other piece of dsp and run it through the cut & emboss machine using the scallop die from the Color & Contour Dies. Adhere to the bottom of the acetate.
4. Die cut the floral image with Polished Pink. Add liquid glue to the top and bottom of the die cut (where it will lay on the designer series paper) adhere it to the front of the card.
5. Tuck one of the gold foil leaves under the floral die cut on the right hand side.
6. Tie bow with the Polished Pink open weave ribbon and add to the front of the card with a glue dot. I added it right over the gold leaf.
7. Add three pearls to the top right hand corner of the card.
8. Add one pearl to the bottom left hand corner of the card.

Inside of Card

1. Adhere Polished Pink to the inside of the card.
2. Stamp "Happy Birthday" sentiment in Polished Pink on the bottom center of the Basic White layer. Adhere gold leaves to the left and the right of the sentiment. Adhere the completed layer inside the card.





Enjoy the tutorial. Any questions please ask.

Jane Proffitt

<https://galfridaystamping.net>



3D Flowers

Martin Stone, United Kingdom

www.martinmayhem.co.uk



Products used

[Click Here](#) to Shop with Martin Stone in the United Kingdom.

CARDSTOCK

Basic White

TOOLS

Stampin' Cut and Emboss Machine

Paper Snips

Bone Folder

Stampin' Trimmer

Tailor Made Tag Dies

DSP & EMBLISHMENTS

Expressions In Ink Designer Series

Paper

ADHESIVES

Multi-Purpose Liquid Glue

Dimensionals

(If you live in the United Kingdom, don't have a demonstrator you work with and would like a catalogue please email me martin@martinsmayhem.co.uk)

Measurements

METRIC - (For A4 cardstock only)

- Expressions In Ink Designer Series Paper
 - 27.9 cm x 15.2 cm
 - 30.4 cm x 0.4 cm

IMPERIAL - (For letter size cardstock only)

- Expressions In Ink Designer Series Paper
 - 11' x 6'
 - 12' x 0.1'

Instructions

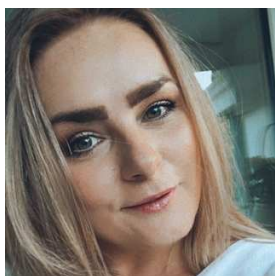
1. I would start with the 3D flowers. Within the paper pack you will find a few sheets where there is a combination of floral images. Using your Paper Snips, cut a wave line around these. You will want three minimum per flower at a variety of sizes.
2. Scrunch these cut out flowers to add texture and then adhere together with liquid glue. Leave these to dry.
3. Moving onto the box, you will need to score along the 11 inches at the following:
 - 1 inch
 - 5 inches
 - 6 inches
 - 10 inches
4. Rotate the piece of DSP and down the short side at 1 inch.
5. Reinforce the score line with a bone folder.
6. You will need to take you Paper Snips and cut into the two long score lines. To define a top and a bottom, cut one on the inside of the score line and the other the outside.
7. Adhere the two ends together in order to form the lid and base.
8. Taking another sheet of DSP, cut small strips of paper then length of the DSP. Wrap around a pen to curl. You will require two of these to attach to the lid of your box.
9. Arrange the flowers from earlier onto the box and adhere with dimensionals.
10. Fussy cut some of the foiled leaves within the DSP and adhere around your flowers.
11. Finish with a die cut tag from the Taler Made Tags.

[Click here](#) to watch the video tutorial.

Enjoy the tutorial. Any questions please ask.

Martin Stone

www.martinsmayhem.co.uk



Hello Ink

Martha Groeger, Germany

www.cookiescraftco.de



Products used

[Click Here](#) to Shop with Martha Groeger in Germany.

BUNDLE

Expressions in Ink Bundle

CARDSTOCK

Basic White

Basic Black

COLOURING

DSP & EMBELLISHMENTS

Expression in Ink DPS

ADHESIVES

Multi Purpose Liquid Glue

Dimensionals

Fom Adhesive Sheets

TOOLS

Paper Snips Scissors

Paper Trimmer

Bone Folder

(If you live in Germany, don't have a demonstrator you work with and would like a catalogue please email me kontakt@cookiescraftco.de)

Measurements

METRIC - (For A4 cardstock only)

- Card Base
 - 21 cm x 14,85 cm
 - Score long side at 10,5cm
- Layer
 - DSP: 9 cm x 13,35 cm
 - Black Cardstock: 8cm x 1,5cm

IMPERIAL - (For letter size cardstock only)

- Card Base
 - 8-1/4" x 5-3/4"
 - Score long side at 4-1/8"
- Layer
 - DSP: 3-3/4" x 5-3/8"
 - Black Cardstock: 3" x 1/2"

Instruction

In the first step you can cut your cardstock and your Designer Series Paper.



In the second step please use the die cuts for the flower and letters. I used the orange colored DSP for my letters.



In the last step you just need to assemble the paper. I used dimensionals for the bigger Designer Series Paper.



Enjoy the tutorial. Any questions please ask.

Martha Groeger

<https://www.cookiescraftco.de/>