



**CREATE WITH US**

INTERNATIONAL TUTORIAL BUNDLE

## **Pansy Petal Suite**

**June 2021**

## **Index**

<b>Jeanna Bohanon</b>	<b>Page 1 - 7</b>
<b>Kayla Renee</b>	<b>8-12</b>
<b>Jane Proffitt</b>	<b>13-18</b>
<b>Julie Gilson</b>	<b>19-24</b>
<b>Jessica Brigden</b>	<b>25-28</b>
<b>Martin Stone</b>	<b>29-32</b>
<b>Mary Eastridge</b>	<b>33-39</b>
<b>Jan Brown</b>	<b>40-44</b>
<b>Narelle Farrugia</b>	<b>45-50</b>
<b>Caroline van der Straaten</b>	<b>51-59</b>
<b>Jackie Bultje</b>	<b>60-63</b>
<b>Marine Wiplier</b>	<b>64-68</b>
<b>Linda Dalke</b>	<b>69-73</b>
<b>Tamara Bertram</b>	<b>74-80</b>
<b>Martha Groege</b>	<b>81-87</b>



# A Little Hello

Jeanna Bohanon, USA

[www.stamptimesomewhere.com](http://www.stamptimesomewhere.com)



# Products used

[Click Here](#) to Shop with Jeanna Bohanon in the U.S.

## **BUNDLE**

Pansy Patch

## **CARDSTOCK**

Bumblebee  
Soft Succulent  
Evening Evergreen  
Fresh Freesia  
Gorgeous Grape  
Rich Razzleberry  
Basic White

## **COLORING**

Gorgeous Grape Classic Ink

## **DSP & EMBELLISHMENTS**

Pansy Petals DSP  
Baker's Twine Essentials Pack (White)

## **ADHESIVES**

Multi Purpose Liquid Glue  
Dimensionals/Mini Dimensionals  
Glue Dots

## **TOOLS**

Stampin' Cut and Emboss Machine

(If you live in the United States, don't have a demonstrator you work with and would like a catalog please email me [j\\_bohanon1003@yahoo.com](mailto:j_bohanon1003@yahoo.com) )



# Measurements

## METRIC -

- Evening Evergreen
  - Card Base - 10.8cm x 14cm
  - Leaves - 5cm x 12cm
- Soft Succulent
  - Folding Layer - 10.2cm x 27.8cm - scored at 5cm, 9.5cm, 18.5cm, 23cm
  - Leaves - 5cm x 12cm
- Bumblebee
  - 9.8cm x 9.8cm
- Gorgeous Grape
  - Inside Layer - 9.5cm x 8.2cm
  - Flower - 5cm x 18cm
- Fresh Freesia
  - Inside Layer - 8.8cm x 7.5cm
  - Flower - 9cm x 5cm
  - Sentiment - 1.2cm x 9.5cm
- Rich Razzleberry
  - Flower Center - 3cm x 3cm
- Basic White
  - Flower - 5cm x 5.5cm
- Pansy Petals
  - Card Base strips - 2 @ 10.2cm x 3cm
  - Layer - 9.5cm x 9.5cm
- Twine - Approximately 30cm

## IMPERIAL -

- Evening Evergreen
  - Card Base - 10.8cm x 14cm
  - Leaves - 5cm x 12cm
- Soft Succulent
  - Folding Layer - 10.2cm x 27.8cm - scored at 5cm, 9.5cm, 18.5cm, 23cm
  - Leaves - 5cm x 12cm
- Bumblebee
  - 9.8cm x 9.8cm
- Gorgeous Grape
  - Inside Layer - 9.5cm x 8.2cm

- Flower - 5cm x 18cm
- Fresh Freesia
  - Inside Layer - 8.8cm x 7.5cm
  - Flower - 9cm x 5cm
  - Sentiment - 1.2cm x 9.5cm
- Rich Razzleberry
  - Flower Center - 3cm x 3cm
- Basic White
  - Flower - 5cm x 5.5cm
- Pansy Petals DSP
  - Card Base Strips -
  - Layer -
- Twine - Approximately 30cm

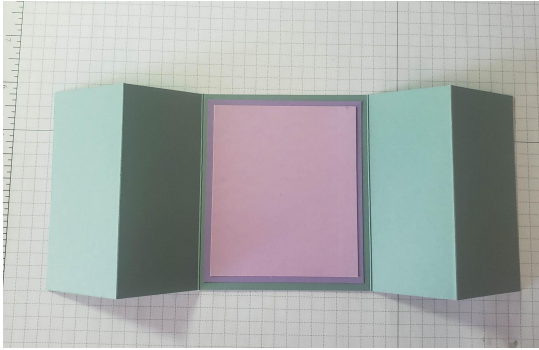
## Instructions

1. Adhere Designer Series Paper strips to the Evening Evergreen Card Base.



2. Adhere the Fresh Freesia to the Gorgeous Grape, then adhere them to the Soft Succulent. Fold on the score lines as shown. Adhere the Soft

Succulent layer to the Evening Evergreen layer.



3. Tie the White Twine around the Bumblebee patterned Designer Series Paper, with the bow on the left side. Adhere the DSP to the Bumblebee Card Stock.
4. To adhere the Bumblebee panel to the card, apply adhesive to the left side Soft Succulent panel, that will allow it to open correctly.



5. Die cut and assemble the pansy as shown. Adhere to the front of the card using Stampin' Dimensionals.
  - a. Cut 3 solid leaves from Soft Succulent, and 3 detail leaves from Evening Evergreen. Adhere the detail leaves to the solid leaves.
  - b. Cut 2 large, individual petals from Fresh Freesia, 1 joined petal from Basic White, and coordinating edge pieces from Gorgeous Grape, and assemble.
  - c. Cut the pansy center pieces from Rich Razzleberry and Bumblebee (use the left side of your layering panel above if you don't have a small scrap) and adhere to the Basic White petal.

- d. Assemble all pieces of the flower together.
- 6. Stamp sentiment on long piece of Fresh Freesia Cardstock with Gorgeous Grape Classic ink. Use your Paper Snips to create "V" ends, making the banner shape. Adhere to the card using Mini Stampin Dimensionals.



Enjoy the tutorial. Any questions please ask.

# Jeanna Bohanon

[j\\_bohanon1003@yahoo.com](mailto:j_bohanon1003@yahoo.com)



# Happy Birthday

Kayla Renee, Australia

[www.kaylamccreadie.com](http://www.kaylamccreadie.com)





# Products used

[Click Here](#) to Shop with Kayla Renee in Australia

## **BUNDLE**

Pansy Patch Bundle

## **CARDSTOCK**

Pacific Point

Basic Black

Basic White

Bermuda Bay

Ombre Specialty Paper

## **COLOURING**

Coastal Cabana Ink

Bermuda Bay Ink

Pacific Point Ink

Night of Navy Ink

Memento Black

## **DSP & EMBELLISHMENTS**

Simply Elegant Trim

Basic Rhinestones

Bumblebee Trinkets

## **ADHESIVES**

Multi Purpose Liquid Glue

Dimensionals

Mini Glue Dots

## **TOOLS**

Scalloped Contours Dies

Wink of Stella Glitter Pen

Blending Brushes

(If you live in Australia, don't have a demonstrator you work with and would like a catalogue please email me at [kayla@kaylamccreadie.com](mailto:kayla@kaylamccreadie.com))

# Measurements

## **METRIC - (For A4 cardstock only)**

- Card Base – Pacific Point
- Bermuda Bay Cardstock
  - 14.3 cm x 9.9cm x 2 pieces
- Basic Black
  - 14.1 cm x 9.7cm
- Basic White
  - 14.1cm x 9.7cm
  - Scrap piece to cut out scalloped rectangle and stamp and die cut pansies/sentiment.
- Ombre Specialty Paper
  - 1cm x 13cm
  - 1.2cm x 14.1cm

## **IMPERIAL - (For letter size cardstock only)**

- Card Base – Pacific Point
- Bermuda Bay Cardstock
  - 4" x 5 1/4" x 2 pieces
- Basic Black
  - 3 7/8" x 5 1/8"
- Basic White
  - 3 7/8" x 5 1/8"
  - Scrap piece to cut out scalloped rectangle and stamp and die cut pansies/sentiment.
- Ombre Specialty Paper
  - 1/4" x 5"
  - 1/2" x 5 1/8"



# Instructions

1. Stamp your pansies on a scrap of Basic White cardstock. I have stamped first my solid largest pansy in Coastal Cabana, then added my next image in Bermuda Bay, then Pacific Point and finally Night of Navy. See the video tutorial (linked at the bottom of this post) for exactly how I stamped my pansies and the order I stamped them in. Die cut the pansies using the coordinating dies. I have stamped one large pansy and three smaller pansies.
2. Die cut a scalloped rectangle from the Scalloped Contours Dies. I have used the second largest rectangle. I have then used a Blending Brush and some Coastal Cabana Ink to softly add some colour to my rectangle. Set these pieces aside.
3. Take your layer of Basic Black and spritz some Wink of Stella over this piece. Adhere to the layer of Bermuda Bay and adhere this to the card base. Next adhere the scalloped rectangle to the centre of your card base with some Stampin' Dimensionals.
4. Taking the smaller strip of the Ombre Glimmer paper, snip the ends on an angle and adhere this to the bottom edge of the rectangle and adhere the pansies over the top using a mixture of Liquid Glue and Stampin' Dimensionals. Embellish the centres with some Basic Rhinestones.
5. Stamp a sentiment on some scrap Basic White in Memento Black and trim this down, cutting the end on an angle. Adhere this where shown.
6. Embellish with a bow tied from the Elegant Trim and a Bumblebee Trinket.
7. To decorate the inside of the card I have added a strip of the Ombre paper to the bottom of the card and added some Elegant Trim before adhering this to the layer of Bermuda Bay. I then added a left-over pansy and another sentiment stamped in Pacific Point.



Enjoy the tutorial. Any questions please ask.

Link to the video tutorial: [https://youtu.be/WVEr73\\_Ht9U](https://youtu.be/WVEr73_Ht9U)

# Kayla Renee

[www.kaylamccreadie.com](http://www.kaylamccreadie.com)



# Pansy Petals

Jane Proffitt

[GalFridayStamping.net](http://GalFridayStamping.net)

[Click Here](#) to  
Shop with Jane  
Proffitt in the  
U.S.



[Click Here](#) to Shop with Jane Proffitt in the U.S.

# Products used

## **BUNDLE**

Pansy Patch Bundle

## **CARDSTOCK**

Basic White

Soft Succulent

Evening Evergreen

## **COLOURING**

Soft Succulent Stamp Pad

Fresh Freesia Stamp Pad

## **DSP & EMBELLISHMENTS**

Pansy Petal DSP

Fresh Freesia  $\frac{3}{8}$ " Open Weave

Bumblebee Trinkets

Pearl Basic Jewels

## **ADHESIVES**

Multi Purpose Liquid Glue

Dimensionals

Glue Dots

Seal

## **TOOLS**

Pansy Dies

Scalloped Contour Dies

Ornate Floral 3D EF

Daubers

(If you live in the United States, don't have a demonstrator you work with and would like a catalogue please email me [galfridaystamping@yahoo.com](mailto:galfridaystamping@yahoo.com))

# Measurements

## IMPERIAL - (For letter size cardstock only)

- Card Base – Basic White
  - 8 ½ x 11 score at 4 ¼
  
- Basic White
  - 5 ⅜ x 4 ⅛
  - 5 ¼ x 4 run thru cut & emboss with Ornate Floral EF
  - die cut all the pieces to the large pansy
  - die cut 1 small and 1 large leaf
  - die cut small frame from Scalloped Contour Dies. Snip off the scalloped edge along the cut line that is on the frame.
  - die cut 2 pieces for the stemmed flower
  - 5 ¼ x 4 for the inside of the card
  
- DSP
  - 2 ¼ x 5 ¼
  
- Evening Evergreen
  - 2 ½ x 5 ¼
  - die cut 1 large and 1 small leaf
  
- Soft Succulent
  - 2 ⅜ x 5 ¼
  - die cut small frame from Scalloped Contour Dies

- die cut 1 large and 1 small veins for leaves and the long stem
- 5  $\frac{3}{8}$  x 4  $\frac{1}{8}$  for the inside of the card
- **METRIC - (For A4 cardstock only)**
- Card Base – Basic White
  - 21.6cm x 14cm, score at 10.8cm
- Basic White
  - 13.6cm x 10.5
  - 13.3cm 10.2
  - 13.3cm x 10.2cm for the inside of the card
- DSP
  - 5.7cm x 13.3cm
- Evening Evergreen
  - 6.4cm x 13.3
- Soft Succulent
  - 6cm x 13.3 cm
  - 13.6cm x 10.5cm inside of card.

Make sure to see the rest of the pieces that have to be created that are listed in the imperial measurements.

# Instructions

1. Create the card base by folding on the score line.
2. Adhere layer of basic white, adhere layer of embossed basic white onto card base.

3. Pop up Evening Evergreen onto the front of the card, layer and adhere with the Soft Succulent and DSP.
4. Stamp sentiment on white scalloped frame and adhere to the Soft Succulent. Pop up onto the front of the card and add Bumblebee Trinket.
5. Blend white pansy cut outs with Fresh Freesia and dauber. Blend the flower that will be adhered to the stem also. Blend leaves with Soft Succulent. Die cut the floral pieces as shown below. Assemble pansy, add Gorgeous Grape face and a black nose. Pop up pansy onto the scalloped frame. Tuck and adhere leaves and stem.
6. Tie bow and adhere to the bottom left hand side of the pansy.
7. Add pearls.

Inside of the card



1. Adhere the Soft Succulent
2. Die cut a small pansy from the dsp. Stamp leaf in the bottom left hand corner with Soft Succulent on the basic white layer. Adhere pansy on top.
3. Blend Fresh Freesia to the edges and adhere white layer to the inside of the card.

Enjoy the tutorial. Any questions please ask.

**Jane Proffitt**

[www.galfridaystamping.net](http://www.galfridaystamping.net)





# Pansy Petals

Julie Gilson

[www.stampingala.com](http://www.stampingala.com)

[Click Here](#) to  
Shop with Julie  
Gilson in the  
U.S.



[Click Here](#) to Shop with Julie Gilson in the U.S.

# Products used

## **BUNDLE**

Pansy Patch Bundle

## **CARDSTOCK**

Pear Pizzazz

Gorgeous Grape

Highland Heather

Basic White

Subtles DSP

## **COLOURING**

Highland Heather Blends

Gorgeous Grape Ink

## **DSP & EMBELLISHMENTS**

Gorgeous Grape  $\frac{3}{8}$ " Sheer Ribbon

Rhinestone Basic Jewels

Basic White Baker's Twine

## **ADHESIVES**

Multi Purpose Liquid Glue

Dimensionals

Glue Dots

Seal

## **TOOLS**

Pansy Dies

Tasteful Textile Embossing Folder

(If you live in the United States, don't have a demonstrator you work with and would like a catalogue please email me [www.stampingala.com](http://www.stampingala.com))

# Measurements

## **IMPERIAL - (For letter size cardstock only)**

- Card Base – Poppy Parade
  - 11 X 4-1/4" score at 5-1/2
- Basic White
  - 3-5/8 X 4-7/8
  - 3-1/2 X 4-3/4
  - 5-1/8 X 3-7/8 for the inside of the card
  - 5 X 3-3/4 for the inside of the card
  - scrap for parts of the flowers
- DSP
  - 1 X 4-3/4
- Highland Heather, Gorgeous Grape, So Saffron, & Basic
  - scrap for flowers

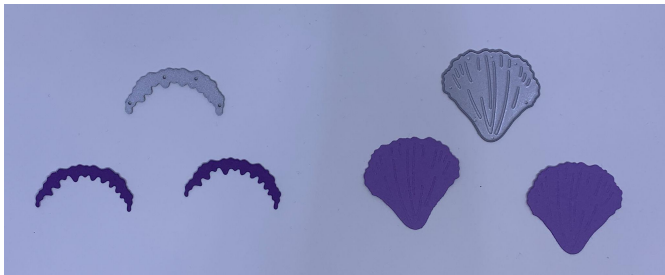
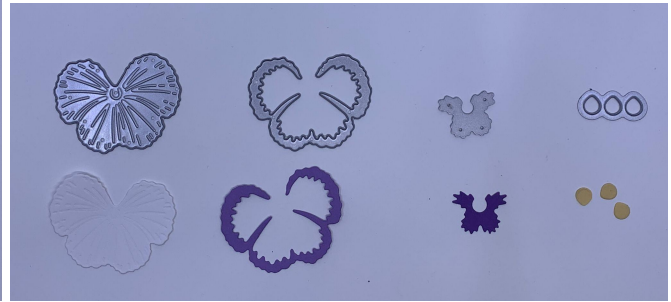
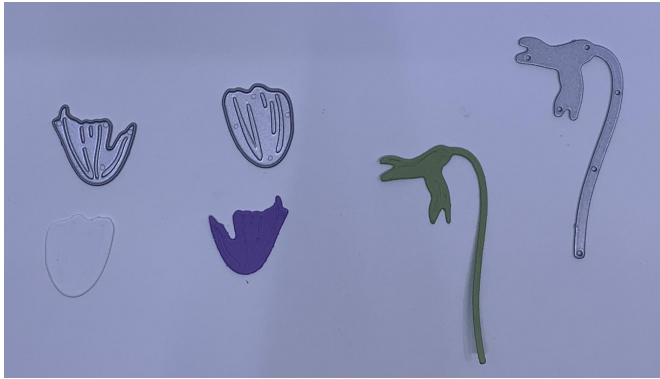
## **METRIC - (For A4 cardstock only)**

- Card Base – Poppy Parade
  - 28 x 11-1/2, score at 14
- Basic White
  - 12-1/2 X 9-1/4

- 12 x 9
- 12-3/4 X 9-1/2 for the inside of the card
- 13 X 10 for the inside of the card
- DSP
  - 2-1/2 X 12
- Pear Pizzazz, Highland Heather, So Saffron, & Basic White scrap

# Instructions

1. Create the card base by folding on the score line.
2. Pear Pizzazz DSP, 1 X 4-3/4, layer on a piece of Basic White, 3-1/2 X 4-3/4, emboss with the Tasteful Textile Embossing Folder.
3. Pear Pizzazz, 3/4 X 4-3/4, die cut using the border die. Layer on the above panel.
4. Layer the Basic White panel on an additional piece of Basic White, 3-5/8 X 4-7/8. Adhere to the card base with Dimensionals.
5. Die cut the floral pieces as shown below.



1. Adhere the piece together as shown below with Multi-purpose Liquid Glue.



1. Adhere to the card front.
2. Color three Basic Rhinestones with the Highland Heather Stampin' Blends Dark Marker.
3. Tie a bow and adhere to the card front with a Glue Dot.

Inside of the card:



Pear Pizzazz,  $\frac{3}{4}$  X  $3\text{-}\frac{3}{4}$ , die cut border die, layer on a piece of Basic White,  $3\text{-}\frac{3}{4}$  X 5.

Stamp the sentiment with Gorgeous Grape Ink.

Adhere a strip of Pear Pizzazz DSP,  $\frac{1}{4}$  X  $3\text{-}\frac{3}{4}$  to the Basic White panel. Layer on an additional piece Basic White,  $5\text{-}\frac{1}{8}$  X  $3\text{-}\frac{7}{8}$ . Wrap a piece of Basic White Baker's Twine around this panel and tie a bow in the front. Adhere to the inside of the card.

Enjoy the tutorial. Any questions please ask.

## Julie Gilson

[www.stampingala.com](http://www.stampingala.com)



# Love You Much Purple Pansies Card

Jessica Brigden, USA

[www.jessbcreativecardiology.com](http://www.jessbcreativecardiology.com)



# Products used

[Click Here](#) to Shop with Jessica Brigden in the U.S.

## **BUNDLE**

Pansy Patch Bundle

## **CARDSTOCK**

Basic White

Blackberry Bliss

Fresh Freesia

## **INK**

Blackberry Bliss

## **DSP & EMBELLISHMENTS**

Pansy Petals DSP

Bumblebee Trinkets

## **ADHESIVES**

Mini Glue Dots

Stampin' Dimensionals

Stampin' SEAL

## **TOOLS**

Scalloped Contours Dies

Stampin' Cut and Emboss Machine

(If you live in the United States, don't have a demonstrator you work with and would like a catalogue please email me [jessb@creativecardiology.com](mailto:jessb@creativecardiology.com) )



# Measurements

## **METRIC - (For A4 cardstock only)**

- Card Base – Blackberry Bliss Cardstock
  - 14.9 cm x 21 cm
- Fresh Freesia Cardstock
  - 13.9 cm x 9.5 cm
- Pansy Petals DSP
  - 13.4 cm x 9 cm
  - 2 large die cut Pansies, 1 small die cut Pansy, and 3 die cut leaves
- Basic White Cardstock
  - 4.1 cm x 7.5 cm die cut using small Scalloped Contours rectangle die

## **IMPERIAL - (For letter size cardstock only)**

- Card Base – Blackberry Bliss Cardstock
  - 5 ½" x 8 ½"; score at 4 ¼" and fold
- Fresh Freesia Cardstock
  - 3 ¾" x 5"
- Pansy Petals DSP
  - 3 ½" x 4 ¾"
  - 2 large die cut Pansies, 1 small die cut Pansy, and 3 die cut leaves
- Basic White Cardstock
  - 1 ½" x 2 ¾" die cut using small Scalloped Contours rectangle die

# Instructions

- Cut each piece of Cardstock listed in the measurements above.
- Fold Blackberry Bliss Cardstock in half to form card base.
- Adhere Fresh Freesia Cardstock to the card base.
- Adhere Pansy Petals DSP to the card base.
- Die cut scalloped rectangle from Basic White cardstock.

- Stamp sentiment onto the Basic White scalloped rectangle using Blackberry Bliss ink; adhere to the card base with Stampin' Dimensionals.
- Die cut pansies and leaves from the Pansy Petals DSP; adhere to card front with Stampin' Dimensionals.
- Adhere Bumblebee Trinket to the card front with a Mini Glue Dot.



Enjoy the tutorial. Any questions please ask.

**Jessica Brigden**

<https://jessb.stampinup.net>



# From Me to You

Martin Stone, United Kingdom

[www.martinmayhem.co.uk](http://www.martinmayhem.co.uk)



# Products used

[Click Here](#) to Shop with Martin Stone in the United Kingdom.

## **BUNDLE**

Pansy Patch Bundle

## **CARDSTOCK**

Basic Black

Basic White

## **COLOURING**

Versamark

## **DSP & EMBLISHMENTS**

Pansy Petals Designer Series Paper

Silver & Clear Epoxy Droplets

Baker's Twine Essentials Pack

## **ADHESIVES**

Multi-Purpose Liquid Glue

Dimensionals

## **TOOLS**

Embossing Folder

Stampin' Cut and Emboss Machine

Heat Tool

Paper Snips

Bone Folder

Basics Embossing Powders

Layering Circles Dies

(If you live in the United Kingdom, don't have a demonstrator you work with and would like a catalogue please email me [martin@martinsmayhem.co.uk](mailto:martin@martinsmayhem.co.uk) )

# Measurements

## **METRIC - (For A4 cardstock only)**

- Card Base – Basic White
  - 10.5 cm x 14.8 cm
- Mat Layer – Basic White
  - 9.5 cm x 13.8 cm
- Basic Black Strip
  - 1.8cms wide, length varies.

## **IMPERIAL - (For letter size cardstock only)**

- Card Base – Basic White
  - 4.1" x 5.8"
- Mat Layer – Basic White
  - 3.7" x 5.4"
- Basic Black Strip
  - 0.7" wide, length varies.

# Instructions

1. Take a sheet of Basic White Card and cut at 10.5cm before routing and scoring the card at 14.8cm. Cut a mat layer of Basic White measuring 13.8cm by 9.5cm.
2. Adhere the matted layer to card base with Dimensionals.
3. Select an array of patterned paper from the Pansy Petals Designer Series Paper before die cutting with the layering circle dies.
4. In the Pansy Petals Designer Series Paper there is also large and medium pansy printed on it. These coordinate with the Pansy Die. That's right; zero stamping. There are also coordinating leaves.
5. Arrange the circles over the matted layer, slightly overlapping them for interest. Place the die cut pansy shapes on Dimensionals over the top. Arrange the leaves around the flowers.
6. Taking the strip of Basic Black, ink up your sentiment in Versamark before stamping. Once the image has been stamped, sprinkle over white embossing powder and heat setting.
7. Trim the sentiment down to a reasonable size before adhering to your card. I positioned mine over the pansy for added interest.
8. To finish, tie a bow using the white bakers twine and pop it behind the sentiment and pansy. This should just slip behind depending on where you placed Dimensionals. Once done, just add three of the silver epoxy drops onto the card.

Enjoy the tutorial. Any questions please ask.

**Martin Stone**

[www.martinsmayhem.co.uk](http://www.martinsmayhem.co.uk)



# Pansy Petals

Mary Eastridge

[maryshouseofcardsandmore.com](http://maryshouseofcardsandmore.com)

[Click Here](#) to shop with  
Mary Eastridge in the US





# Products used

## **BUNDLE**

Pansy Patch Bundle

## **CARDSTOCK**

Basic White

Calypso Coral

Pale Papaya

Bumble Bee

## **COLOURING**

Soft Succulent Stamp Pad

Evening Evergreen Stamp Pad

Pale Papaya Stamp Pad

Calypso Coral Stamp Pad

Bumble Bee Stamp Pad

## **DSP & EMBELLISHMENTS**

Pansy Petal DSP

Evening Evergreen 3/8" Open Weave

Bumblebee Trinkets

White Baker's Twine

## **ADHESIVES**

Multi Purpose Liquid Glue

Dimensionals

Seal

## **TOOLS**

Pansy Dies

Hammered Metal 3D EF

Daubers

(If you live in the United States, don't have a demonstrator you work with and would like a catalogue please email me [mary@maryshouseofcardsandmore.com](mailto:mary@maryshouseofcardsandmore.com))



# Measurements

## IMPERIAL - (For letter size cardstock only)

- Card Base – Pale Papaya
  - 4  $\frac{1}{4}$  X 11 - Score on 5  $\frac{1}{2}$
- Calypso Coral
  - 4  $\frac{1}{8}$  X 5  $\frac{3}{8}$  - Embossed using the Hammered Metal 3D EF
- Pale Papaya
  - 3  $\frac{1}{2}$  X 4  $\frac{3}{4}$
- Pansy Petals DSP
  - 3  $\frac{3}{8}$  X 4  $\frac{5}{8}$
- Calypso Coral
  - 2 X 4  $\frac{1}{4}$
- Pansy Petals DSP
  - 1  $\frac{7}{8}$  X 4  $\frac{1}{8}$
- Calypso Coral
  - 3  $\frac{3}{4}$  X 2  $\frac{3}{4}$
- Pale Papaya

- $3 \frac{5}{8} \times 2 \frac{5}{8}$  - Embossed using the Hammered Metal 3D EF
- Basic White
  - $3 \frac{1}{4} \times 2 \frac{1}{4}$
- Using Basic White, Calypso Coral, Pale Papaya and Bumble Bee Cardstock, die cut all the pieces to the large pansy.
- Using Soft Succulent and Evening Evergreen Cardstock, die cut the pieces for 1 small and 1 large leaf.
- Using Basic White, Pale Papaya and Evening Evergreen Cardstock, die cut the pansy bloom.
- $4 \times 5 \frac{1}{4}$  Pansy Petals DSP for the inside of the card
- $3 \frac{1}{2} \times 4 \frac{3}{4}$  Basic White for the inside of the card
- $\frac{1}{2} \times 3 \frac{1}{2}$  Pansy Petals DSP strip for the inside of the card

**METRIC - (For A4 cardstock only)**

- Card Base – Pale Papaya  
10.8cm x 27.9cm, score at 14cm
- Calypso Coral - Embossed with Hammered Metal 3D EB  
10.5cm X 13.7cm
- Pale Papaya
  - 8.9cm X 12.1cm
- Pansy Petals DSP

8.6cm X 11.8cm

- Calypso Coral  
5.1cm X 10.8cm
- Pansy Petals DSP  
4.8cm X 10.5cm
- Calypso Coral  
9.5cm X 7cm
- Pale Papaya - Embossed with Hammered Metal 3D EF  
9.2 cm X 6.7cm
- Basic White  
8.3cm X 5.7cm
- Pansy Petals DSP for the Inside of the Card  
10.5cm X 13.7cm
- Basic White for the Inside of the Card  
8.9cm X 12.1cm
- Pansy Petals DSP Strip for the Inside of the Card  
1.27cm X 8.9cm

Make sure to see the rest of the pieces that have to be created that are listed in the imperial measurements.

# Instructions

1. Create the card base by folding on the score line.

2. Adhere the embossed piece of Calypso Coral to the front of the card base using multipurpose glue.
3. Attach the Pale Papaya and DSP pieces together using Seal and then add to the card base slanted to the left using Seal.
4. Attach the Calypso Coral and DSP “going across” pieces together using Seal and then adhere to the center of the card base using Seal
5. Attach the Calypso Coral and the embossed piece of Pale Papaya together with glue and add a piece of ribbon across the front and wrap the ends around to the back and adhere. Attach to the card base using Dimensionals.
6. Use Calypso Coral Ink Pad and a Dauber and distress the edges of the piece of Basic White Cardstock and then using Evening Evergreen Ink Pad stamp the sentiment towards the bottom of the cardstock then adhere to the embossed piece of Pale Papaya using Seal
7. Assemble the pansy, leaves and bloom and add to the top of the stamped Basic White cardstock.
8. Add bow and bumble bee.

#### Inside of the card

1. Adhere the DSP to the inside of the card base using Seal.
2. Basic White - Using the stamp set and Pale Papaya, Calypso Coral, Evening Evergreen, and Soft Succulent Ink Pads, stamp a small pansy, stem and leaves to the left side. Using the Evening Evergreen stamp the sentiment.
3. Add the strip of DSP across the bottom of the Basic White cardstock.
4. Add a bow tied with white baker’s twine to the stem of the flower using glue.
5. Adhere to the DSP using Seal

Enjoy the tutorial. Any questions please ask.

# Mary Eastridge

[mary@maryshouseofcardsandmore.com](mailto:mary@maryshouseofcardsandmore.com)





# Pansy Petals

Jan Mansor Brown

[www.janbcards.com](http://www.janbcards.com)



# Products used

[Click here](#) to shop with Jan Mansor Brown in the UK

## **BUNDLE**

Pansy Patch Bundle

## **CARDSTOCK**

Basic White

Fresh Freesia

White Vellum Cardstock

## **ADHESIVES**

Tombow Multi Purpose Liquid Glue

Dimensionals

Glue Dots

## **DSP & EMBELLISHMENTS**

2021 - 2023 InColour Shimmer Vellum

2021 - 2023 InColour Jewels

Bumblebee Trinkets

Fresh Freesia Loose Flower Flourishes

$\frac{3}{8}$ " Open Weave Ribbon - Fresh Freesia

## **COLOURING**

Fresh Freesia Ink stamp

Daffodil Delight Stampin' Blends

## **TOOLS**

Cut & Emboss Machine

Layering Ovals Dies

Paper Snips

Bone Folder

Brick & Mortar 3D Embossing Folder

(If you live in the United Kingdom, the Netherlands, France, Germany or Austria, and don't have a demonstrator you work with and would like a catalogue please email me

[janb@janbcards.com](mailto:janb@janbcards.com)

# Measurements

## **IMPERIAL & METRIC (for A4 Cardstock)**

Card Base – Basic White

11½" x 5¾" scored and folded at 5¾" (29.2cm x 14.6cm)

Basic White Cardstock

Top Layer - 2 pieces (includes top layer inside) 5" x 5" (12.7cm x 12.7cm)

Scrap for sentiment

Fresh Freesia Cardstock

Middle Layer - 2 pieces (includes middle layer inside card) 5¼" x 5¼"  
(13.3cm x 13.3cm)

Scrap for sentiment layer

## **IMPERIAL (for Letter-size Cardstock)**

Card Base – Basic White

11" x 5½" scored and folded at 5½"

Basic White Cardstock

Top Layer - 2 pieces (includes top layer inside card) 4¾" x 4¾"

Scrap for sentiment

Fresh Freesia Cardstock

Middle Layer - 2 pieces (includes middle layer inside card) 5" x 5"

Scrap for sentiment layer



# Instructions

- 1). Create the card base by scoring at and folding in half. Burnish with bone folder to get crisp fold.
- 2). Emboss one Basic White top layer using the Brick & Mortar 3D Embossing Folder. Adhere to one of the Fresh Freesia middle layers.
- 3). Adhere the second Basic White top layer to the second Fresh Freesia middle layer and then adhere to the inside of the card on the right-hand side.
- 4). Using the Soft Succulent Shimmer Vellum die-cut 3 pansy bud stems, two large solid leaves and one small solid leaf; using the Evening Evergreen Shimmer Vellum, die-cut two large leaves fancy dies and one small leaf fancy die, plus the centre of the pansy; using the Fresh Freesia Shimmer Vellum die-cut the large outer pansy trim, two of the smaller pansy trims and three of the pansy buds inner petals.
- 5). Using the White Vellum Cardstock die-cut three outer bud petals, one larger petal and two of the individual petals. TIP: there are embossed lines on the solid dies and you may find you can get more definite results if you add a shim to your die-cutting machine. Colour a small piece of the white vellum using the Dark Daffodil Stampin' Blend (or a Stampin' Write Marker). When dry die-cut three circles with the appropriate die - you only need one circle so save the other two for future use.
- 6). Assemble all vellum die-cuts as shown in the photograph of the card. TIP: No glue is visible on my pansy, buds or leaves. I used Tombow to adhere the pieces together making sure I kept it under the Shimmer Vellum. The only place I used it under White Vellum is the join between the two upper petals. In this area I spread Tombow over the area that would be overlapping the second piece.
- 7). Using Fresh Freesia Ink, stamp the sentiment on a scarp of Basic White Cardstock and die-cut using the no. 2 straight cut die from the Layering

Oval dies. Using Fresh Freesia Cardstock, die-cut a scalloped oval, to layer the sentiment onto, using the no. 2 scallop die from the same set of dies. Adhere the two pieces together.

8). Now's the time to put your card together. Using the layered cardstock created at no. 2). To adhere the large pansy adhere Dimensionals under the Evening Evergreen pansy centre in such a way that they cannot be seen from the front of the card. TIP: I cut pieces off the edge of a sheet of Dimensional and make a patchwork of pieces to cover most of the area.

9). Add two Mini Dimensionals under each leaf behind the Evening Evergreen centres. I positioned them so they couldn't be seen through the large pansy white vellum.

10). Position the three buds in position and add two Mini Dimensionals under each bud. For the first and second buds, I cut off the stems so they wouldn't be seen through the large pansy. For the pansy bud on the right-hand side I turned it so that the stem went down to the leaves and wasn't visible under the large pansy.

11). Take two strips of Fresh Freesia Open Weave Ribbon approximately 2" (5cm) long and wrap around the top left-hand corner and the bottom right-hand corner - adhere at the back using Glue Dots. Take a third piece of ribbon and tie into a bow. Adhere onto the left-hand side strip. Using Glue Dots and Tombow, adhere three large Loose Flowers Flourishes along the right-hand piece of ribbon. NOTE: I use Glue Dots and Tombow to make sure the glue goes through the ribbon and adheres to the card front.

12). Adhere this front panel onto the card base making sure you put Tombow on top of the ribbon end so they stay in place! Finally, adhere one Bumblebee Trinket on the brick wall and three gems on the sentiment.

Enjoy the tutorial. Please contact me if you have any questions

[janb@janbcards.com](mailto:janb@janbcards.com) 😊

**Jan Mansor Brown**

[www.janbcards.com](http://www.janbcards.com)



# Pansy Patch Card

Narelle Farrugia  
[www.stamplicious.com](http://www.stamplicious.com)



# Products used

## **STAMP SET**

Pansy Patch Stamp Set

## **CARDSTOCK**

Gorgeous Grape

Basic White

## **COLOURING**

Memento Black Ink

Gorgeous Grape Ink

Highland Heather Ink

Fresh Freesia Ink

Blackberry Bliss Ink

Soft Succulent Ink

Dark Mango Melody Blend

## **DSP & EMBELLISHMENTS**

Silver Metallic Pearls

## **ADHESIVES**

Multi Purpose Liquid Glue

Dimensionals

## **TOOLS**

Paper Snip Scissors

Paper Trimmer

Bone Folder

Tasteful Texture 3D Embossing

Folder

Stampin' Cut & Emboss Machine

(If you live in Australia, don't have a demonstrator you work with and would like a catalogue please email me [narelefarrugia@yahoo.com](mailto:narelefarrugia@yahoo.com))

# Measurements

## **METRIC - (For A4 cardstock only)**

- Card Base – Basic White Thick Cardstock
  - 29.7cm x 10.5cm
- Basic White Thick Cardstock
  - 13.3cm x 7.5cm
  - 13.3cm x 3.5cm
- Basic White Thick Cardstock for sentiment
  - 8cm x 2cm
- Gorgeous Grape Cardstock
  - 13.3cm x 5cm
- Basic White Cardstock to stamp images on

## **IMPERIAL - (For letter size cardstock only)**

- Card Base – Basic White Thick Cardstock
  - 11  $\frac{3}{4}$  " x 4  $\frac{1}{8}$  "
- Basic White Thick Cardstock
  - 5  $\frac{1}{4}$  " x 2  $\frac{7}{8}$  "
  - 5  $\frac{1}{4}$  " x 1  $\frac{1}{2}$  "
- Basic White Thick Cardstock for sentiment
  - 3  $\frac{3}{8}$  " x  $\frac{3}{4}$  "
- Gorgeous Grape Cardstock
  - 5  $\frac{1}{4}$  " x 2"
- Basic White Cardstock to stamp images on

# Instructions

1. Score the Basic White Cardstock base at 14.85cm and reinforce the crease with a Bone Folder.
2. With your fingers, tear an edge of the Gorgeous Grape Cardstock and adhere to Basic White piece measuring 13.3cm x 7.5cm piece leaving as much of an edge of Gorgeous Grape as you like.
3. Emboss the Basic White piece of cardstock measuring 13.3cm x 3.5cm with the Tasteful Texture 3D Embossing Folder.
4. Adhere this embossed cardstock to the back of the torn Gorgeous Grape Cardstock, leaving about 1.5cm of the embossed piece showing.
5. Once all three pieces of cardstock are joined, place Dimensionals to the back of this piece and place it on your card base. You can leave out the Dimensionals if you don't like a raised card.
6. Stamp the base image of the pansy in Fresh Freesia Ink three times. Take the second layer of the pansy stamp and stamp Gorgeous Grape over the three flowers - this gives the pansy it's definition. I then took Highland Heather Ink and added a third layer of colour around the centre of the flower. Take the centre image of the pansy and stamp in the centre of the pansies in Blackberry Bliss Ink.
7. Take the Dark Mango Melody Blend and colour the centre of the flower. If you don't have this colour, use any colour you have.

8. To stamp the leaves, take the base leaf image, ink it up with Soft Succulent Ink and stamp off once on scratch paper to dull the colour. Then stamp on Basic White Cardstock. Repeat this as you need six leaves. Take the more detailed leaf stamp and stamp over the six leaves with full strength Soft Succulent Ink.
9. Fussy cut the pansies and leaves out. If you have the dies, you can then die cut them out.
10. Layer the flowers and leaves on your card as desired, raising two of them up with Dimensionals.
11. Stamp the sentiment and layer it over the pansies with Dimensionals.
12. Add three Silver Metallic Pearls to finish off your card.



Enjoy the tutorial. Any questions please ask.

**Narelle Farrugia**

[www.stamplicious.com](http://www.stamplicious.com)

[narellefarrugia@yahoo.com](mailto:narellefarrugia@yahoo.com)





# Pansy Patch Suite Flatmail project

Caroline van der Straaten  
The Netherlands



# Products used

[Click Here](#) to Shop with Caroline van der Straaten



## BUNDLE

- Pansy Patch / Vrolijke viooltjes bundle

## CARDSTOCK

- Basic White A4 cardstock
- Basic White thick A4 cardstock
- Fresh Freesia A4 cardstock
- scrap So Saffron cardstock
- scrap Mint Macaron cardstock
- scrap So Succulent cardstock

## INKPADS

- Fresh Freesia
- Gorgeous Grape
- Granny Apple Green
- Balmy Blue
- Daffodil Delight (reinker)

## DSP/EMBELLISHMENTS

- Pansy Petals Designer Series Paper
- Fresh Freesia open weave ribbon

## ADHESIVES

- Multi Purpose Liquid Glue
- Mini dimensionals
- Tear and Tape (optional)

## PUNCHES / DIES

- Stitched Rectangle Dies
- Scalloped contours dies

## TOOLS

- Basic Pattern Decorative Masks
- Blending Brush
- Sponge dauber
- Paper Snips
- Trimmer
- Stampin' Cut and Emboss machine

# Measurements

## METRIC - (For A4 cardstock only)

- **Basic White thick Cardstock - flatmail card base**
  - 24 x 21 cm
- **Fresh Freesia Cardstock**
  - 11 x 15 cm (2x)
  - 11 x 15.5 cm (1x) - for insert card
  - 2x die cut frame scalloped contours dies (2nd largest)
  - 2x die cut frame scalloped contours dies (scalloped edge)
  - die cuts pansy dies: 3x flower centre
- **So Saffron Cardstock**
  - 1x 3 flower hearts
- **Mint Macaron Cardstock**
  - 3x leaves large and 6x leaves vein small
- **So Succulent Cardstock**
  - 3x leaves large and 6x leaves vein small
- **Basic White Cardstock**
  - 10.5 x 14.5 cm (2x)
  - 10.5 x 15 cm (1x) - for insert card
  - 2x die cut rectangle stitched dies (2nd largest)
  - die cuts pansy dies:
    - 6x flower petal,
    - 3x flower body,
    - 3x flower body edge.
- **DSP**
  - 11.5 x 4.5 cm (2x)
  - strip 1.5 cms (I used full 30,5 cms long and just cut off what I didn't need)

# Measurements

## IMPERIAL - (For letter size cardstock only)

- **Basic White thick Cardstock - flatmail card base**
  - 9.5 x 8.¼ inch
- **Fresh Freesia Cardstock**
  - 4.¼ x 5.¾ inch (2x)
  - 4.¼ x 6 inch (1x) - for insert card
  - 2x die cut frame scalloped contours dies (2nd largest)
  - 2x die cut frame scalloped contours dies (scalloped edge)
  - die cuts pansy dies: 3x flower centre
- **So Saffron Cardstock**
  - 1x 3 flower hearts
- **Mint Macaron Cardstock**
  - 3x leaves large and 6x leaves vein small
- **So Succulent Cardstock**
  - 3x leaves vein large and 6x leaves vein small
- **Basic White Cardstock**
  - 4 x 5.½ inch (2x)
  - 4 x 5.¾ inch (1x) - for insert card
  - 2x die cut rectangle stitched dies (2nd largest)
  - die cuts pansy dies:
    - 6x flower petal,
    - 3x flower body,
    - 3x flower body edge.
- **DSP**
  - 4.½ x 1.¾ inch (2x)
  - strip of ½ inch (I used full 12 inch long and just cut off what I didn't need)

# Instructions

- Cut a piece of 24 x 21cms or 9.½ x 8.¼ inch thick basic white
- Place the 21 cms or 8.¼ inch side to the top of your trimmer
- Score at 5 cm or 2 inch



- Turn the paper and place the 24 cm or 9.½ inch side to the top of your trimmer
- Score at 12 cm or 4.¾ inch
- Gently fold the smaller side in (use a bone folder after folding gently)
- Now carefully fold into a card (the smaller side is still folded).



- Glue one piece of Fresh Freesia cardstock 11 x 15 cm or 4.¼ x 5.¾ inch on the right side and glue one piece of Basic white 10.5 x 14.5 cm or 4 x 5.½ inch on top.
- Put a tiny bit of Multipurpose glue on the outer edges and fold inwards to create pockets.





- Glue the 2 DSP pieces measuring 11.5 x 4.5 cm or 4½ x 1¾ inch on top of the created pockets



- Close the pocket card and wrap a piece of Fresh Freesia ribbon around it.
- Use dimensionals to place the Fresh Freesia panel (11 x 15 cm or 4¼ x 5¾ inch) on top of the closed Flatmail card.
- Set this aside for now as we go along with a technique (see next page)



- Get ONE piece of both sizes of the white cardstock and use a Blending Brush and the dotted mask to apply Fresh Freesia ink onto the white cardstock and get a dotted effect.
  - Tip: If you'd like an ombre effect just imagine your cardstock is divided in 3 layers. Sponge the top layer the most, then the middle part and less on the bottom.
- You can add faux stitching on the one measuring 10.5 x 14.5 cm or 4 x 5½ inch if you'd like.
- Glue this one on top of the Fresh Freesia cardstock on the front of your card
- Take the small Strip of DSP and the die cutted scalloped borders.
- Glue them together and place on the top and bottom of the largest piece of sponged white cardstock. I cut the bottom part of the dsp a bit smaller before gluing, but that's a personal preference. You can do this however you like.
- Glue this on top of the left over piece of Fresh Freesia cardstock.
- Now it's time to decorate
- Stamp sentiments from the Pansy Patch / Vrolijke Viooltjes stamp set onto the two white stitched rectangle pieces
- Stick one down with dimensionals on top of a Fresh Freesia scalloped edge label
- Glue the other with multipurpose glue onto the other Fresh Freesia label
- Use the one with dimensionals for the front of your card and the glued one for the insert card.
- Now it's time to assemble the flowers
- Make sure you've die cutted all the pieces before you start.



- Use a sponge dauber and some Gorgeous Grape ink to apply ink in the middle of the Flower bodies.
  - Tip: take a look at Linda Dalke's video on You Tube, before you start with this step. She explains how to assemble a pansy and color with a dauber so well
- Also sponge the edges of the flower centre to create extra dimension
- First glue the edge of the flower body



- Use a dimensional to stick the flower centre on top
- Place the so saffron flower heart in the middle
- Glue the flower petals behind the flower body
- Glue the leaves together and glue them on the sides of the flower (first take a look how the flower is going to be placed on your card. You don't want the leaf to cover your sentiment!)
- Stick the labels onto your cards (I used dimensionals again for the one on the front and just multipurpose glue on the one for the insert card, as this one cannot be too thick) and style with the pansies.





Enjoy the tutorial. If you have any questions please feel free to ask.



## Caroline van der Straaten

Independent Stampin' Up!® demonstrator

The Netherlands

- MY STAMPIN' UP! SHOP: [Click here](#)
- BLOG: [www.caroskaartjes.blogspot.com](http://www.caroskaartjes.blogspot.com)
- INSTA: [@caroskaartjes](#)
- FB: [Caro's Kaartjes](#)
- YOU TUBE: [Caro's Kaartjes](#)
- Email: [caroskaartjes@hotmail.nl](mailto:caroskaartjes@hotmail.nl)

If you don't have a demonstrator yet, I'd love to be yours!  
Please send me an Email if you need more information on Stampin' Up! products,  
if you want to order or if you'd like a catalogue.  
My Email address is: [caroskaartjes@hotmail.nl](mailto:caroskaartjes@hotmail.nl)



# Pansy Bouquet

Jackie Bultje, Canada

[www.thepamperedstamper.com](http://www.thepamperedstamper.com)



## Products used

[Click Here](#) to shop with The Pampered Stamper

Pansy Patch Bundle

**CARDSTOCK**

Evening Evergreen

Basic White Thick

**COLOURING**

Fresh Freesia Classic Ink

**DSP & EMBELLISHMENTS**

Bumblebee trinkets

Pansy Petals paper

**ADHESIVES**

Multi Purpose Liquid

Glue Dimensionals

Mini Glue Dots

**TOOLS**

Paper Snips

Basic Borders dies

Stamparatus

(If you live in Canada, don't have a demonstrator you work with and would like a catalogue please email me at [jackiebultje@gmail.com](mailto:jackiebultje@gmail.com))

# Measurements

## **METRIC - (For A4 cardstock only)**

- Card Base – thick basic white cardstock 21.5 cm by 13.9cm scored at 10.75cm
- Evening Evergreen Cardstock 2cm by 13.9cm
- Pansy Petals small pansy print 2.5cm x 13.9cm , small yellow print 1cm x 13.9cm, fresh freesia gingham print 3.8cm by 13.9cm

## **IMPERIAL - (For letter size cardstock only)**

- Card Base – Basic White Thick Cardstock 8 ½” by 5 ½” scored at 4 ¼”
- Evening Evergreen Cardstock
  - 1” by 5 ½”
- Pansy Petals paper
  - small pansy print 1” by 5 ½”, small yellow print ½” by 5 ½” , fresh freesia gingham print 1 ½” by 5 ½”.

# Instructions

1. Take thick basic white card base and trim the edge with the basic borders die (about 1 ¼” or 3.3cm off the bottom edge as shown)
2. Trim Evening Evergreen cardstock strip with basic borders die. Adhere small yellow print paper over the long straight edge of the Evening Evergreen cardstock. Adhere small pansy print paper over the small yellow

print leaving only a narrow strip showing. Adhere entire piece to card front.

3. Using stamparatus, stamp the saying in Fresh Freesia.

4. Fussy cut a bouquet of pansies from the Pansy Petals paper. Pop up with dimensionals on the bottom right of your card.

5. On the inside of the card adhere the Fresh Freesia gingham paper.

6. Adhere bumblebee embellishment with a glue dot.



Enjoy the tutorial. Any questions please ask.

[www.thepamperedstamper.com](http://www.thepamperedstamper.com)





## Page A4 “Je t’aimerai très fort”

Marine Wiplier, France

[www.marineetstamp.com](http://www.marineetstamp.com)



# Products used

[Click Here](#) to Shop with Marine Wiplier in France

## STAMP SET

### *Set de tampons*

Pansy Patch Stamp

*Set de tampons Parcelle de pensées*

## CARDSTOCK

### *PAPIERS*

Basic White

*Blanc simple*

## COLOURING

### *ENCREURS*

Pale Papaya

*Papaye Pâle*

Fresh Freesia

*Freesia en fleur*

Polished Pink

*Pierre Rose Polie*

## DSP & EMBELLISHMENTS

### *PAPIERS & EMBELLISSEMENTS*

Pansy Petals DSP

*Papier de la série Design Pétale de Pensée*

Flower for every season Ribbon

Compo pack

*Lot de rubans Des Fleurs pour chaque saison*

## ADHESIVES

Dimensionals

Glue dots

## TOOLS

Pansy Dies

*Poinçons Pensées*

Messages Dies

*Poinçons Messages*

Paper trimmer

*Coupe-papier*

Stampin' Cut & Emboss Machine

*Machine de découpe et gaufrage*

*Brosses-Estompe*

(If you live in France, don't have a demonstrator you work with and would like a catalogue please email me at [marineetstamp@gmail.com](mailto:marineetstamp@gmail.com))

Si vous vivez en France, que vous n'avez pas de démonstratrice et que vous souhaitez un catalogue, contactez-moi à l'adresse mail [marineetstamp@gmail.com](mailto:marineetstamp@gmail.com)

# Measurements

## Mesures

### METRIC

#### MESURES

- Layout – A4 Cardstock Basic White  
*Fond de page - Papier A4 Blanc simple*
  - 21 cm x 29,7 cm
- 3 bands in DSP  
*3 bandes dans le papier design*
  - 2 bands = 29,7 x 6 cm
  - 1 band = 29,7 x 8 cm

### IMPERIAL

- Layout – A4 Cardstock Basic White
- 3 bands in DSP
  - 2 bands = 12" x 2"
  - 1 band = 12" x 3"



# Instructions

1. Take the A4 cardstock as a base for your layout.  
With a Blending Brush and the Pale Papaya ink pad, ink the left part of the cardstock from the bottom to the top until getting the result you wish.  
*Prenez la feuille A4 Blanc Simple comme fond de page. Avec une Brosse-estompe et l'encreur Papaye Pâle, encrez le côté gauche de la page du haut vers le bas jusqu'à obtenir le résultat qui vous plaît.*
2. With the Pansy Patch stamp set, stamp several little pansies in Pale Papaya, the middle part in Fresh Freesia.  
*Avec le set de tampons Parcelle de Pensées, tamponnez plusieurs fois le petit modèle en Papaye Pâle, le centre de la fleur en Freesia en fleur.*
3. Place the precut 3 paper bands approximately in the middle of the cardstock, above the flowers you stamped.  
*Placez les trois bandes de papier préalablement coupées à peu près au milieu de la page, par-dessus les fleurs que vous venez de tamponner.*
4. With the Pansy Dies and the DSP, cut 5 big pansies and 5 little pansies from different colors. Place your photo and make a frame around it with pansies.  
*Avec les Poinçons Pensées et les papiers Design, découpez 5 grands pensées et 5 petites et disposez-les en cadre autour de votre photo.*
5. Stamp the sentiment and place the label above a pansy with dimensionals.  
*Tamponnez le sentiment et placez l'étiquette sur une pensée en 3D avec un dimensional.*
6. Put the final touch with a ribbon bow !  
*Mettez la dernière touche avec le nœud !*

Enjoy the tutorial. Any questions please ask.

## Marine Wiplier

<https://www.marineetstamp.com>



## Pansy Patch Thank You Card

Linda Dalke, Australia

[www.lhiggins.blogspot.com](http://www.lhiggins.blogspot.com)



# Products used

[Click Here](#) to Shop with Linda Dalke in Australia

## **BUNDLE**

Pansy Patch Bundle

## **CARDSTOCK**

Basic White Thick (Card base)  
Pale Papaya  
Basic White (to stamp pansies on)

## **COLOURING**

Pale Papaya Classic Ink  
Calypso Coral Classic Ink  
Bumblebee Classic Ink  
Blackberry Bliss Classic Ink  
Fresh Freesia Classic Ink  
Polished Pink Classic Ink  
Evening Evergreen (for Sentiment)

## **DSP & EMBELLISHMENTS**

Pansy Petals 12" x 12" DSP  
Pale Papaya Shimmer Vellum  
Gilded Gems  
Polished Pink Open Weave ribbon

## **ADHESIVES**

Mini Glue Dots  
Dimensionals  
Seal

## **TOOLS**

Scalloped Contours Dies  
Stampin' Cut and Emboss Machine

(If you live in Australia, don't have a demonstrator you work with and would like a catalogue please email me at [lindastampsau@gmail.com](mailto:lindastampsau@gmail.com) )

# Measurements

## **METRIC - (For A4 cardstock only)**

- Card Base – Basic White Thick Cardstock
  - 21cm x 14.8cm
- Pale Papaya Cardstock
  - 14.3cm x 10cm
- Basic White Cardstock – from which to cut diecut pansies
  - scrap approximately 9.9cm x 10.5cm
- Pansy Petals DSP - 3 pieces as follows:
  - 13.8cm x 6.2cm
  - 13.8cm x 2.5cm
  - Plus scrap to die cut leaves from
- Shimmer Vellum – scrap from which to cut scalloped rectangle
  - 10cm x 7cm

## **IMPERIAL - (For letter size cardstock only)**

- Card Base – Basic White Thick Cardstock
  - 8-1/2" x 5-1/2"
- Pale Papaya Cardstock -
  - 4" x 5-1/4"
- Basic White Cardstock – from which to diecut pansies
  - Scrap approximately 4" x 4-1/4"

- Pansy Petals DSP - 3 pieces as follows:
  - 5" x 2-1/2"
  - 5" x 1"
  - Plus scrap to die cut leaves from
- Shimmer Vellum - 4" x 2-3/4"

# Instructions

- Fold White Card Base in half and set aside
- Adhere DSP panels to Pale Papaya cardstock piece next to each other, and so that there is a border of Pale Papaya all around the outside.
- Using 3rd largest Scalloped Rectangle from the Scalloped Contours dies, cut one shape from Pale Papaya Shimmer Vellum
- Stamp the "Thank You" greeting at the bottom of the Shimmer Vellum piece
- Stamp Pansies on Basic White scrap. You will be cutting 3 pansies – 1 larger one, and 2 small ones. For the large Pansy I stamped the more solid large pansy in Pale Papaya Ink, and then added the detailed large pansy over the top in Calypso Coral ink. The centre of the pansies are stamped in Bumblebee and Blackberry Bliss ink. For the small pansies I stamped in Fresh Freesia ink (one is stamped off for a lighter result), and then added the detail over the top in Polished Pink ink. Again I used Blackberry Bliss for the centres. Diecut pansies with the co-ordinating dies
- Arrange pansies and leaves in the centre of the Shimmer Vellum rectangle. I added the large pansy and leaves with regular adhesive, but used Dimensionals to give the smaller pansies some height.
- Add Gilded Gems into the centre of each pansy. I used a larger gem on my larger pansy and smaller ones on the small pansies.
- As a final touch I took a small length of Open Weave ribbon (I chose the Polished Pink one – approximately 6cm in length) and folded it in half before using a glue dot to pop it behind one of the smaller pansies.
- Now attach the whole Scalloped Rectangle shape to the card base by using dimensionals to adhere it. I made sure the dimensionals were hidden by placing them behind my pansies.
- Enjoy your card!



Enjoy the tutorial. Any questions please feel free to contact me

**Linda Dalke**

[www.lhiggins.blogspot.com](http://www.lhiggins.blogspot.com)

[lindastampsau@gmail.com](mailto:lindastampsau@gmail.com)



# Pansy Patch in Black & Gray

Tamara Bertram, Canada

[tamarabertram.stampinup.net](http://tamarabertram.stampinup.net)





# Products used:

[Click Here](#) to Shop with Tamara Bertram in Canada.

## **BUNDLE**

Pansy Patch Bundle

## **CARDSTOCK**

Basic White  
Smoky Slate  
Basic Black

## **COLOURING**

Basic Gray Classic Ink

## **DSP & EMBELLISHMENTS**

Holiday Rhinestones

## **ADHESIVES**

Stampin' Seal  
Multipurpose Liquid Glue  
Dimensionals

## **TOOLS**

Stampin' Cut and Emboss Machine  
Bone Folder  
Pansy Dies  
Take Your Pick Tool

(If you live in Canada, don't have a demonstrator you work with and would like a catalogue please email me [bertram4@shaw.ca](mailto:bertram4@shaw.ca) )

# Measurements

## **METRIC - (For A4 cardstock only)**

- Card Base – Basic White
  - 29,7 cm x 10,5 cm
- Layer - Basic Black
  - 10 7/10 cm x 8 1/5 cm
- Layer - Basic White
  - 10 cm x 7 1/2 cm
- Scraps of Smoky Slate and Basic Black for flowers, leaves and stems

## **IMPERIAL - (For letter size cardstock only)**

- Card Base – Smoky Slate
  - 8 1/2" x 5 1/2"
- Layer - Basic Black
  - 4 1/4" x 3 1/4"
- Layer - Basic White
  - 4" x 3"
- Scraps of Smoky Slate and Basic Black for flowers, leaves and stems

# Instructions:

- Fold your Smoky Slate card base in half. Burnish well with your bone folder for a nice, crisp fold.
- First we do a bit of stamping:
  - Using the “Happy Birthday” sentiment from the Pansy Patch stamp set, randomly stamp around the edge of your card base 4-6 times, using Basic Gray ink.



- Adhere the Basic White layer to the Basic Black layer
- Attach the Basic Black layer to the card base (at an angle) using dimensionals



- Now we do a LOT of die cutting!
- Using your dies, cut out:
  - Two flower petal pieces in Smoky Slate; Two flower petal edges in Basic Black
  - One large flower body piece in Smoky Slate; One large flower body edging in Basic Black
  - One flower centre in Basic Black
  - One large leaf in Smoky Slate; One large leaf vein in Basic Black
  - One large leaf in Basic Black; One large leaf vein in Smoky Slate
  - Two small leaves in Smoky Slate; Two small leaf veins in Basic Black
  - One flower bud in Smoky Slate; One flower bud base in Basic Black
  - One long stem in Basic Black

- Now we do some gluing:
  - Glue the above pieces together using your liquid glue. (I have listed which pieces are glued together on each line).
- You should now have glued together:
  - (4) leaves (two large and two small)
  - (1) flower body
  - (2) flower petals
  - (1) flower bud + bud base
- More gluing!
  - Glue the two grey petals to the back of the body base piece. You now have a completed pansy (hurrah!)
  - Glue the bud + bud base piece to the long stem piece. You now have a completed pansy bud (hurrah again!)
- Now we put it all together!
  - Start by gluing your completed pansy bud piece in the top right hand corner of your Basic White card layer
  - Place dimensionals on the back of your completed large pansy flower and attach to the Basic White card layer, over to the right hand side
  - Using liquid glue, attach one of the small leaves under the pansy flower
  - Using liquid glue, attach the large gray/black leaf under the pansy flower, slightly on top of the smaller leaf
  - Using liquid glue, attach the second small grey/black leaf in the top left hand corner
  - Using dimensionals, attach the large black/gray leaf in the top left hand corner, slightly on top of the smaller leaf
- We're getting there!
- Next more stamping!
  - In Basic Gray ink, stamp the Happy Birthday sentiment in the lower left hand corner of the Basic White layer
- Lastly, add three Pumpkin Pie (or ANY colour!) Holiday Rhinestones to the project, as you like.
- Ta-Da! Done!



Enjoy the tutorial. Any questions please ask.

## Tamara Bertram

[tamarabertram.stampinup.net](http://tamarabertram.stampinup.net)

[bertram4@shaw.ca](mailto:bertram4@shaw.ca)





# Pansy Patch Card

Martha Groeger, Germany

[www.cookiescraftco.de](http://www.cookiescraftco.de)



# Products used

[Click Here](#) to Shop with Martha Groeger in Germany.

## **BUNDLE**

Pansy Patch Stamp Set

## **CARDSTOCK**

Basic White

## **COLOURING**

Stazon Black

## **DSP & EMBELLISHMENTS**

Pansy Petals Designer Series Paper

## **ADHESIVES**

Multi Purpose Liquid Glue  
Dimensionals

## **TOOLS**

Paper Snips Scissors  
Paper Trimmer  
Bone Folder

(If you live in Germany, don't have a demonstrator you work with and would like a catalogue please email me [kontakt@cookiescraftco.de](mailto:kontakt@cookiescraftco.de) )



# Measurements

## **METRIC - (For A4 cardstock only)**

- Card Base
  - 21 cm x 14,85 cm
  - Score long side at 10,5cm
- Layer
  - 9 cm x 13,35 cm
  - DSP: 8cm x 3cm

## **IMPERIAL - (For letter size cardstock only)**

- Card Base
  - 8-1/4" x 5-3/4"
  - Score long side at 4-1/8"
- Layer
  - 3-3/4" x 5-3/8"
  - DSP: 3" x 1"

# Instruction

I used the little cut dot from the stamp set to create the background. It is stamped with the Stazon ink pad in black.

To cut out the leaves and the flower you can use the dies or your scissors. The DSP stripe is attached to the card layer with the liquid glue and all the other elements are added with dimensionals. I can't craft without dimensionals 😊





Enjoy the tutorial. Any questions please ask.

**Martha Groeger**

<https://www.cookiescraftco.de/>